



INSTALLATION INSTRUCTIONS

EAGLE 4700 SERIES ALARM CONTROL PANELS

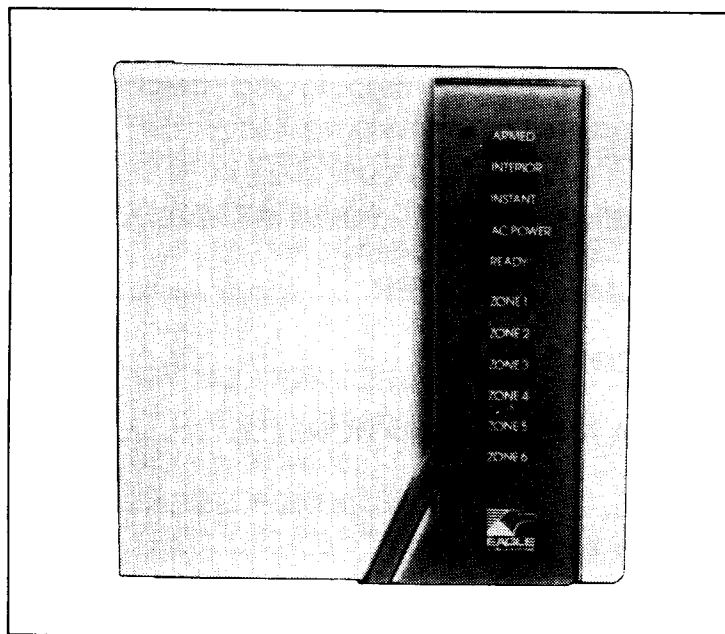


Table of Contents

Section	Page
1. INTRODUCTION	3
GENERAL DESCRIPTION	3
SPECIFICATIONS	3
COMPATIBLE UL-LISTED DEVICES.....	3
2. INSTALLATION.....	4
TYPICAL FIRE INSTALLATION	6
3. PROGRAMMING	7
PROGRAMMING SHEET	7
KEYPAD PROGRAMMING	7
DOWNLOADING FROM A COMPUTER.....	9
PROGRAMMING RECORD SHEET	11
4. PROGRAMMING DATA AND INFORMATION.....	12
5. WIRING DIAGRAM	20

Alarm Lock Systems, Inc.
345 Bayview Avenue
Amityville, New York 11701
Call Toll Free: (800) ALA-LOCK (800-252-5625)
FAX: (516) 789-3383

1. INTRODUCTION

GENERAL DESCRIPTION

Eagle 4700-series alarm systems comprise a six-zone keypad-programmable residential control panel utilizing advanced nonvolatile EEPROM alarm technology. Up to eight 4-digit user codes may be programmed by User 1, his code also serving as a programming security code. Three separate keypad panics are provided: Fire; Auxiliary; and Police. The ambush feature, when selected as an option, utilizes User 6 as an ambush code. The Eagle 4700DL has provisions for downloading (see *Section 3. PROGRAMMING: Downloading from a Computer*).

The system is housed in a rugged wall-mounted steel enclosure and includes an EGL4700RBL 4-wire backlit LED keypad.

SPECIFICATIONS

Operating Temperature:	0–49 °C (32–120 °F)
Input Power:	12Vac Class 2 step-down transformer, 40VA (Recommended: Model ALTR1240)
Number of Zones:	6 EOL Supervised + Panic
Loop Resistance:	100 ohms (maximum)
Loop Response:	560mS
End-of-Line Resistor:	2200 ohms
Bell Output:	10.8–16.8Vdc, 1.5A (1.0A for UL installations).
Burglary:	Steady bell, programmable time-out
Fire:	Pulsing bell, programmable time-out
Auxiliary Power:	12.0–12.7Vdc (continuous), 500mA (max., including keypads & smoke detectors)
4-Wire Smoke-Detector Power:	9.47–12.3Vdc (interruptable), 50mA
Keypad Current:	40mA (typ.)
Number of Keypads:	4, maximum
Recommended Standby Battery:	12V rechargeable sealed lead-acid, 4 or 6AH (Ampere-Hours)
Fuses:	F1 (BATTERY), 4A, non-replaceable F2 (AUX. POWER), 1A F3 (BELL POWER), 3A
Housing Dimensions:	11.2 x 12.3 x 3.1", HxWxD (28.4 x 31.2 x 3.1cm)
Shipping Weight:	Approx. 7 lb (3.1kg)

COMPATIBLE UL-LISTED DEVICES

4-Wire Smoke Detector:	ESL445AT
Horn:	Wheelock 34T-12R

2. INSTALLATION

Note: For normal system operation and user programming instructions, refer to the EAGLE 4700 USER'S GUIDE (OI155).

Mounting. Choose a mounting location accessible to (a) a continuously-powered ac source; (b) a cold-water-pipe ground, ideally no further than 10 feet away; and (c) telephone lines. Remove knockouts for cables. Place the control panel at a convenient viewing height and mount; #10 Type A screws are recommended.

A keypad should be placed near the exit/entry door. If another keypad is to be located at the panel, remove the knockout in the enclosure door and install the keypad from the front. Secure the keypad to the door with four screws. If a keypad will not be mounted in the door, affix the self-adhesive Alarm Lock logo onto the knockout. Secure the door closed by means of the three Phillips-head screws supplied.

Holes are provided in the backplate for mounting into a single- or double-gang box (the box must be grounded) or directly into the wall. After keypad wiring is completed, place the keypad onto the two hooks at the top of the backplate and lower the keypad until it snaps into place.

To remove the keypad from the backplate before it has been mounted, insert a small screwdriver into the square hole at the bottom at about the angle shown in (a) of Fig. 1. so that the blade is forward of the retaining tab. Pull up on the screwdriver handle to pop off the cover.

To remove the keypad after mounting, insert a screwdriver into the square hole at the bottom. Push up hard to release the retaining tab while pulling the front cover out at the bottom, as shown in (b).

Fill out the zone description for each area of protection on the Zone Identification Label and affix the label inside the keypad door as shown in Fig. 2. Add decals for the emergency buttons as required.

Grounding. Connect Terminal 23 to a metal cold-water pipe using a suitable pipe clamp. Do not ground to a gas pipe, plastic pipe, or ac ground connections. If a metal cold-water pipe is not available, connect to a 6-foot grounding rod driven into the earth. Use at least 16-gauge wire and keep wire run as short and direct as possible with no sharp bends.

Power-Up Sequence. Referring to the wiring diagram:

1. Connect power transformer (required option).
2. Install a 4AH (ALBAT4) or 6AH (ALBAT6) backup battery (required option).
3. Connect telephone cord to RJ31X jack.

When power is first applied, all LEDs will light and the sounder will come on briefly. System is ready after all but READY and AC POWER LEDs extinguish (about 5 seconds).

System Reset. To reset the system and reload the default program:

1. Remove all power.
2. Short jumpers JP1 and JP2 together.
3. Reapply power and wait for all but READY and AC POWER LEDs to extinguish.
4. Remove short across JP1 and JP2.

Note: *Enable Default Program* must be programmed in order to load the default program.

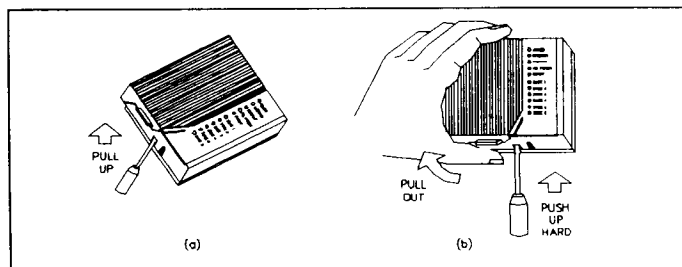


Fig. 1. Removing keypad cover (a) before mounting and (b) after mounting on wall.

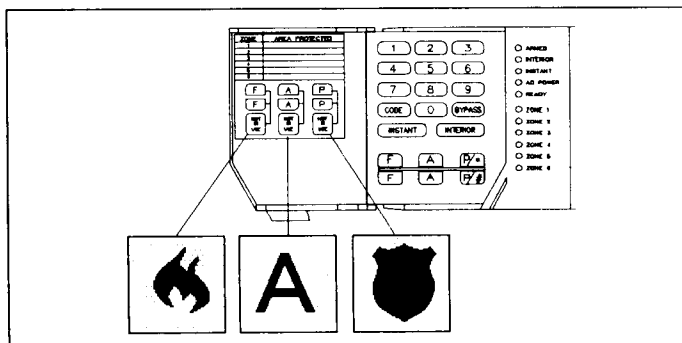


Fig. 2. Zone Identification Label placement showing locations of emergency-button decals (where used).

Keypad Reset. Enter any valid 4-digit arming code to

- reset keypad display or sounder.
- silence alarm bells
- reset smoke detectors

Note: When using the keypad, a short beep signifies verification of a valid code or command. Four short beeps indicates an error signal; that is, an unsuccessful attempt to enter a command.

Ac-Failure Indication. Loss of ac power is indicated when the AC POWER LED is off. The standby battery will provide backup power. If ac power is lost for longer than 15 minutes, the sounder will pulse at the keypad (enter any arming code to silence); however, if power is restored, the sounder will stop and no indication will be given. If AC POWER LED is flashing (with pulsing sounder), standby battery terminal voltage has discharged below normal.

Note: If both ac and dc power are interrupted in normal service, the control panel will return in its last state when power is restored.

Arming/Disarming the System. The READY LED on indicates that the system is disarmed and ready to be armed. When a valid 4-digit arming code is entered, the ARMED LED will come on, the READY LED will go off and the panel will arm. If an invalid code is entered, the keypad will respond with four short beeps and the system will fail to respond. Wait at least 3 seconds before attempting to reenter the code.

Easy Commands. The following “Easy Commands” are programmable options:

- **Easy Arming.** If enabled, permits arming by pressing the “P/★” Key followed by Key 1. Disarming still requires entry of a valid user code.
- **Easy Forced Arm.** If enabled, bypasses all unsecured zones and arms the panel by pressing the “P/★” Key followed by Key 2.
- **Easy Reset.** If enabled, resets the following conditions by pressing the “P/★” Key: (a) keypad sounder; (b) communications failure; and (c) alarm memory.

Keypad Panic. The EGL4700RBL keypad has provisions for three keypad panics: (1) *Fire Panic*: press both “F” keys; (2) *Auxiliary Panic*: press both “A” keys; and (3) *Police Panic*: press both “P” keys. (**Note:** Key pairs must be pressed simultaneously.) *Fire Panic* is audible only and are programmed in BLOCK NO. 19; programming “A,A” to inhibit transmission to the central station will disable these keypad-panic features. *Police Panic* may be silent or audible; see BLOCK NO. 04, Location 4: System Options.

Panic Zone. Wire momentary normally-open remote panic buttons to Terminals 10 and 13. This 24-hour dedicated Panic Zone may be programmed for silent or audible panic alarm. Install an end-of-line resistor across Panic-Zone terminals. In UL installations, remote panic buttons must be located in the same room as the control panel.

Keyswitch Arming Option. A normally-open momentary keyswitch may be wired across Terminals 10 and 13, replacing the wired Panic Zone (see BLOCK 05, Location 2: Miscellaneous Options). An end-of-line resistor is *not* required for the keyswitch. Arming response time may be reduced by cutting capacitor C17, just above Terminal 5.

Alarm Indication. The ARMED LED flashing rapidly along with one or more Zone LEDs shows that an alarm has occurred on the indicated zone(s). After the panel is disarmed, *alarm memory* will cause the READY LED to flash along with the indicated Zone LEDs. *Alarm memory* will be cleared the next time a valid user code is entered.

Communicator Failure Indication. A communicator transmission failure is identified by a slowly-flashing ARMED LED. In the event of a communications failure, the alarm code will remain in memory. On the next successful transmission, the original alarm code will be sent followed by the new alarm code.

Swinger Shutdown. If selected, all non-24-Hour Zones will reset only twice (3 alarms) until rearmed in order to prevent runaways to the central station. To enable Swinger Shutdown, add an “8” to the value selected for *Message Length* (see BLOCK NO. 04, Location 3).

Testing the System. After installation is completed, test the system as follows: (1) Call the central station to inform them of the test. (2) Initiate an alarm, preferably on a zone that activates a steady bell. (3) Verify proper alarm signaling, then call the central station to confirm their receipt of a good transmission.

TYPICAL FIRE INSTALLATION (Where permitted by local codes.)

At least one smoke detector should be installed directly outside each sleeping area. If there is more than one floor, additional smoke detectors should be installed on each level, including the basement. The living-area and basement smoke detectors should be installed near the stairway of the next upper level.

For increased protection, additional detectors should be installed in areas other than those required, such as dining rooms, individual bedrooms, furnace rooms, utility rooms, and hallways. Heat detectors, rather than smoke detectors, are recommended in garages, attics, and kitchens due to conditions that may result in false alarms and improper operation. Large areas and areas with partitions, ceiling beams, doorways and open joists will require additional detectors. Refer to NFPA Standard 74 (National Fire Protection Association, Batterymarch Park, Quincy, MA 02269) for additional information, including proper mounting methods.

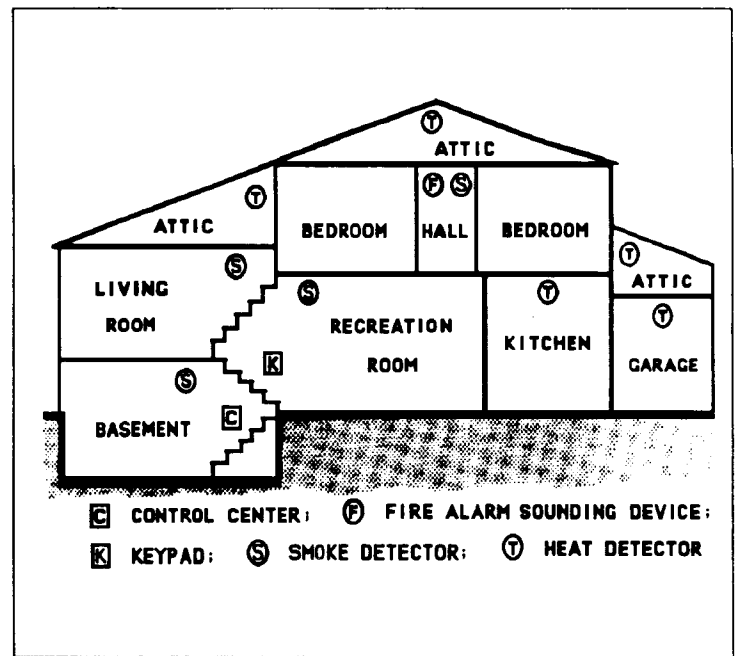


Fig. 3. Typical fire installation.

3. PROGRAMMING

Note: For user programming instructions, refer to the EAGLE 4700 USER'S GUIDE (OI155).

All system features, codes, and communicator transmission information may be programmed using the keypad or downloaded from Alarm Lock PCD8000 Programming Software.

Default Program. The following default program is factory installed (note that it is set up for communication). It is the installer's responsibility to add, change, and/or delete features in accordance with these programming instructions to customize the system to the user's requirements and to conform to local codes. The default conditions will be restored whenever the system is reset (see *System Reset*) if *Enable Default Program* is programmed (see *BLOCK NO. 5, Location 4: Miscellaneous Options*).

Note: "A" denotes a blank (non-value) entry, and is programmed as such.

Default Values. The control panel is factory programmed as follows:

- Dealer Program Code: 4700
- Telephone No. 1: 234AAAAAAAAA
- Telephone No. 2: AAAAAAAAAAAA (blank)
- Callback No.: AAAAAAAAAAAA (blank) (for Eagle 4700DL only)
- Communicator Options: TouchTone®; 20 Baud; 2300Hz; 3/1; Audible Panic
- Account No. 1: 1234
- Account No. 2: AAAA (blank)
- Entry Delay: 30 seconds
- Exit Delay: 60 seconds
- Burglary Bell Timeout: 15 minutes
- Fire Bell Timeout: None
- Zone 1: Delayed (Alarm Code: 31)
- Zone 2: Interior Follower (Alarm Code: 32)
- Zone 3: Perimeter (Alarm Code: 33)
- Zone 4: Perimeter (Alarm Code: 34)
- Zone 5: Perimeter (Alarm Code: 35)
- Zone 6: Fire (Alarm Code: 16)
- User 1 Code: 1234
- Ambush: AA (blank)
- Ac Fail: AA (blank)
- Panic: 22
- Low Battery: AA (blank)
- Opening: A (blank)
- Closing: A (blank)
- Test: AA (blank)
- Bypass: A (blank)
- Restore: E
- Trouble: F
- No. of Rings Before Pickup: 8 (for Eagle 4700DL only)
- Keypad Fire Panic: 16
- Keypad Auxiliary Panic: 22

PROGRAMMING SHEET

A programming record sheet is provided at the end of this section. Fill out this sheet when planning system features and communicator information for the particular installation and keep it on file for future reference. Refer to *PROGRAMMING DATA AND INFORMATION* for guidance in programming each block.

Note: Contact the central station to ascertain receiver format, data format, account numbers, alarm codes, and telephone numbers.

KEYPAD PROGRAMMING

General Information. As can be seen from the Programming Sheet, the programming routine is

divided into a series of 22 Blocks numbered "01" through "21" and "00". Each block except *Telephone Numbers* contains 4 locations; *Telephone Numbers* (Blocks 01, 02 and 03) each contain 12 locations. Entering the Dealer Program Mode starts you at Block No. 01, Location No. 1 and automatically steps you through the programming routine sequentially, location by location, as shown on the programming sheet, unless you select otherwise. The keypad LEDs are used to identify block number and data entry, but in a hexadecimal form, which will become familiar with use.

LED Indications in Program Mode. LEDs display the following in the Dealer Program Mode:

System Status LEDs (ARMED; INTERIOR; INSTANT; AC POWER). Light in combination to indicate the data entry in the selected location within the block. *Example:* ARMED and INSTANT LEDs lit represent "5" (1 + 4).

READY LED. Flashes slowly to indicate the Program Mode.

LED	Data
O ARMED	= 1
O INTERIOR	= 2
O INSTANT	= 4
O AC POWER	= 8
O READY	= (flashing) Dealer Program Mode
LED	Block #
O ZONE 1	= 1
O ZONE 2	= 2
O ZONE 3	= 4
O ZONE 4	= 8
O ZONE 5	= 16
O ZONE 6	= Not used

ZONE LEDs (1-5). Light in combination to represent the block number. Zone LEDs are assigned values as follows:

To determine the Block Number, add up the values of all lighted Zone LEDs. *Example:* Zone LEDs 1, 3 & 4 lit represent Block No. 13 (1 + 4 + 8).

Note: The location number is not displayed while programming, however when a new block is entered, the keypad will sound a 1/2-second beep and the Zone LEDs will display the new block number.

Keypad Functions in Program Mode. Keypad buttons are assigned new functions in the Dealer Program Mode, as follows:

1 - 9; 0. Data Entry (Numerical) Keys. (Also used to select block numbers, as above.) Enter the data value directly, then press the P/# Button to advance to the next location.

Note: Each location can accommodate 15 numbers, however they must each be represented by a single character. To accomplish this, characters A through F are used to represent numbers 10 through 15, respectively. These extended characters must be entered by pressing the CODE Button, then the number indicated.

DATA CHARACTER	TO PROGRAM,
A (= 10)	Press CODE, then 1
B (= 11)	Press CODE, then 2
C (= 12)	Press CODE, then 3
D (= 13)	Press CODE, then 4
E (= 14)	Press CODE, then 5
F (= 15)	Press CODE, then 6

"P/*" Button. Select Block Number "XX" ("XX" = Block Number). If not programming in the normal sequence, press the top "*" Button, then two numerical keys representing the block number (00-21).

The keypad will beep with each press of the keypad and a half-second beep will sound to indicate a valid entry (four short beeps will indicate an invalid block number). The Zone LEDs will display the Block Number in hexadecimal form; similarly, the system status LEDs will display the data entry in the first location of that block.

“P/#” Button. Next Location. Advance to the next location within the block. The keypad will beep with each press of the keypad; at the end of a block, the keypad will sound a 1-second beep (approximately) to notify advancement to the first location of the next block.

Dealer Program Mode. The Dealer Program Mode may be accessed only while the panel is disarmed, as follows:

1. Press the CODE Button.
2. Press the “P/★” Button.
3. Enter your Dealer Program Code. (The default Dealer Program Code is 4,7,0,0, but this number may be changed.) The green READY LED will flash to indicate the Dealer Program Mode. The red Zone 1 LED will light to indicate Block No. 01 (Location 1); one or more system status LEDs will light to indicate the data entry in that location.
4. To select a particular block (1st location), press the “P/★” Button followed by the block number. (The block number is always entered as a two-digit number, thus Block No. 4 is entered as “04”.)
5. To advance to the next location, press the “P/#” Button.
6. To program data entries 0-9, press the respective numerical key on the keypad. To program an extended data character A-F, press the CODE Button, then numerical key 1-6, respectively (see chart, above). The data entry for the selected location will be displayed by the system status LEDs.
7. Repeat steps 5 and 6 to continue programming.
8. To exit the Dealer Program Mode, press the INTERIOR Button. All LEDs will light for about five seconds before returning the system to normal operation.

DOWNLOADING FROM A COMPUTER (Eagle 4700DL Only)

Data may be downloaded directly into the control panel, either locally or remotely via telephone lines, using any IBM PC-compatible computer with Alarm Lock Eagleloader® PCD8000 software. Similarly, a control-panel program may be uploaded to the computer.

Local Downloading

The PCL8000 Local Download Cable shown in the PCI8000 instructions is not required for the Eagle 4700DL. Instead, connect a telephone line from Terminals 15 and 16 to the modem LINE jack. (Remove the plug coming from PCI8000-J5.)

Local downloading is further simplified as follows. Set up the computer for a *Function-6 Method Download* (see below). Then, a connection will be established immediately, ignoring the status of the zones, (a) at panel power-up or (b) after entering and exiting the Dealer Program Mode.

Remote Downloading

An installer need not be on the premises to remotely download data; using the *Callback Method*, data will be downloaded automatically after 8 rings (unless programmed otherwise) and a panel confirmation callback. Note that the Dealer Program Code in the PCD8000 must agree with that (or the default code) of the control panel.

With an installer at the site and an operator at the computer, data transfer may be initiated manually by the installer using the *Function-6 Method*. To initiate the data transfer, (a) arm the panel; (b) disarm; then, (c) within 5 seconds, hold down Key 6 for about two seconds. (The installer should be in contact with the computer operator, as a different procedure is initiated at the computer end.)

Auto Downloading

Eagleloader PCD8000 Software Version 2.E and later includes a Standby Utility wherein up to 99 control-panel programs may be preset for automatic remote downloading from the installation sites while the computer is unattended. Then, the installer need program the panel for only the following: (a) *Auto*

Download ID Number (identifying the program to be downloaded from the computer) and (b) *Download Telephone Number* (at the computer). **Note:** The Dealer Program Code in the PCD8000 must agree with that of the control panel for the remote connection to be established. Enter the *Auto-Download ID Number* in BLOCK NO. 21, Locations 1-2. When an Auto Download is executed at the panel (arm, disarm, then press Key 6 within 5 seconds), the panel will call the computer and the respective program will be loaded automatically.

Instructions for installing and running the PCD8000 program are provided in the software package. On-screen prompting and the extensive use of help menus simplify programming, and an error-checking mode locates omissions and incompatible data to reduce the possibility of mistakes.

Note: (1) Downloading requires a modem compatible with the PCD8000; (2) Downloading must be disabled in UL installations.

EAGLE 4700DL PROGRAMMING RECORD SHEET

Refer to *PROGRAMMING DATA AND INFORMATION* for instructions for each block.

BLOCK	FEATURE	LOCATION
01	TELEPHONE NO. 1	1 2 3 4 5 6 7 8 9 10 11 12
02	TELEPHONE NO. 2	1 2 3 4 5 6 7 8 9 10 11 12
03	CALLBACK NO.	1 2 3 4 5 6 7 8 9 10 11 12
04	COMMUNICATOR INFO.	1 2 3 4
	DATA FORMAT	
	RECEIVER FORMAT	
	MESSAGE LENGTH	
	SYSTEM OPTIONS	
05	KEYPAD CONDITIONS	1 2 3 4
	EMERGENCY COND'NS	
	MISC. OPTIONS	
	EASY COMMANDS	
	MISC. OPTIONS	
06	ACCOUNT NO. 1	1 2 3 4
07	ACCOUNT NO. 2	1 2 3 4
08	TIMEOUTS	1 2 3 4
	ENTRY DELAY	
	EXIT DELAY	
	BURGLARY BELL	
	FIRE BELL	
09	ZONE 1	1 2 3 4
	OPTIONS	
	ALARM CODE	
10	ZONE 2	1 2 3 4
	OPTIONS	
	ALARM CODE	
11	ZONE 3	1 2 3 4
	OPTIONS	
	ALARM CODE	
12	ZONE 4	1 2 3 4
	OPTIONS	
	ALARM CODE	
13	ZONE 5	1 2 3 4
	OPTIONS	
	ALARM CODE	
14	ZONE 6	1 2 3 4
	OPTIONS	
	ALARM CODE	
15	AMBUSH; AC FAIL	1 2 3 4
	AMBUSH ALARM CODE	
	AC-FAIL ALARM CODE	
16	PANIC; LOW BATTERY	1 2 3 4
	PANIC ALARM CODE	
	LOW BAT. ALARM CODE	
17	OPENINGS/CLOSINGS; 24-HOUR TEST	1 2 3 4
	OPENING CODE	
	CLOSING CODE	
	24-HOUR TEST CODE	
18	BYPASS; RESTORE; TROUBLE; # RINGS	1 2 3 4
	BYPASS CODE	
	RESTORE CODE	
	TROUBLE CODE	
	NO. OF RINGS	
19	KEYPAD PANIC	1 2 3 4
	FIRE PANIC	
	AUXILIARY PANIC	
20	CHIME TIME	1 2 3 4
	CHIME TIME	
	RESERVED	
21	AUTO ID#; NO EOL	1 2 3 4
	AUTO ID# (x1;x10)	
	NO EOL, ZONES 5-6	
	NO EOL, ZONES 1-4	
00	DEALER PROGRAM CODE	1 2 3 4

CUSTOMER:	DATE:
ADDRESS:	
ACCOUNT NO.	TEL.

4. PROGRAMMING DATA AND INFORMATION

The information in this section is essential for the proper completion of the Programming Sheet. Instructions are presented in the normal programming sequence encountered when entering the Dealer Program Mode and as they appear on the Programming Sheet, by Block Number.

Note: The factory default program is given at the beginning of Section 3.

BLOCK NO. 01: TELEPHONE NO. 1

Enter the telephone number of the primary central station receiver in Locations 1 through 12 using digits 0 through 9. Be sure to include an area code or access number, if necessary. Enter a "C" to provide a 3-second dial delay. "B" denotes "*". An "A" will signify the end of the telephone number. Be sure that all remaining locations are programmed "A" (blank).

The communicator will report to Telephone No. 1. If the transmission is unsuccessful, the communicator will alternate between Telephone No. 1 and Telephone No. 2 (if programmed), making 8 attempts to each.

BLOCK NO. 02: TELEPHONE NO. 2

Enter the telephone number of the secondary central station receiver in Locations 1 through 12 using digits 0 through 9. Be sure to include an area code or access number, if necessary. Enter a "C" to provide a 3-second dial delay. "B" denotes "*". An "A" will signify the end of the telephone number. Be sure that all remaining locations are programmed "A" (blank).

If a telephone number is programmed in this block, Backup Reporting is automatic. The panel will make 16 attempts to reach the central station, alternating between Telephone No. 1 and Telephone No. 2.

If Split Reporting is programmed, all conditions will be reported to Telephone No. 1 except Openings and Closings, which will be reported to Telephone No. 2. Eight attempts will be made to Telephone No. 1; if unsuccessful, 8 attempts will be made to Telephone No. 2.

If neither Backup Reporting nor Split Reporting is programmed, all conditions will report to Telephone No. 1 only.

BLOCK NO. 03: CALLBACK NO.

(For the Eagle 4700DL only.) Enter the download callback telephone number in Locations 1 through 12 using digits 0 through 9. Be sure to include an area code or access number, if necessary. Enter a "C" to provide a 3-second dial delay. "B" denotes "*". An "A" will signify the end of the telephone number. Be sure that all remaining locations are programmed "A" (blank).

BLOCK NO. 04: COMMUNICATOR INFORMATION

Note: Consult central station for acceptable formats and message length.

Location 1: Data Format.

- Standard Format requires a 3- or 4-digit account number followed by a single digit event code. *Examples:* "123 3" or "6548 2".
- Extended (or *Universal* or *Expanded*) Format transmits two rounds of data. The first round contains the account number and an expanded character; the second repeats the expanded digit as account number before identifying zone code. *Examples:* "123 3" then "333 1"; or "4312 E" then "EEEE 7".
- Partial Extended Format transmits a standard signal for alarm conditions and an extended message for restores and other system conditions. The extended message codes must be B-F. *Example:* Alarm Condition "853 1"; Restore "853 E" then "EEE 1".

Select the required data-format entry for Location 1 from the following table:

DATA FORMAT	ENTER
Pulse Dialing; Standard Format or 4/2	0
TouchTone® Dialing; Standard Format or 4/2	1
Pulse Dialing; Extended Format	2
TouchTone Dialing; Extended Format	3
Pulse Dialing; Partial Extended Format	4
TouchTone Dialing; Partial Extended Format	5
No Communicator (Local Alarm)	8

Location 2: Receiver Format - Select the receiver-format entry for Location 2 from the following table:

RECEIVER FORMAT	TYPICAL RECEIVERS	ENTER
10 Baud, 1400Hz, No Parity	Ademco Slow; FBI; Silent Knight Slow	0
10 Baud, 1400Hz, Parity	FBI	1
10 Baud, 2300Hz, No Parity	FBI	2
10 Baud, 2300Hz, Parity	FBI	3
20 Baud, 1400Hz, No Parity	Adcor; FBI; Silent Knight Fast	4
20 Baud, 1400Hz, Parity	FBI; Radionics Slow (1400)	5
20 Baud, 2300Hz, No Parity	DCI; Franklin; Quickalert; Sescoa; Varitech	6
20 Baud, 2300Hz, Parity	FBI; Radionics Slow (2300)	7
40 Baud, 1400Hz, No Parity	FBI	8
40 Baud, 2300Hz, No Parity	FBI	A
40 Baud, 2300Hz, Parity	FBI; Radionics Fast (2300)	B

Note: In UL installations, only the following listed digital receivers may be used: FBI Model CP-220FB; Ademco Model 685; and Silent Knight Model 9000.

Location 3: Message Length - Select the message-length entry for Location 3 from the following table:

MESSAGE LENGTH	ENTER
3/1 3-Digit Account Number; 1-Digit Event Code	1
4/1 4-Digit Account Number; 1-Digit Event Code	2
4/2 4-Digit Account Number; 2-Digit Event Code	4
3/1 3-Digit Account Number; 1-Digit Event Code with Swinger Shutdown	9
4/1 4-Digit Account Number; 1-Digit Event Code with Swinger Shutdown	A
4/2 4-Digit Account Number; 2-Digit Event Code with Swinger Shutdown	C

Location 4: System Options.

Note: The Panic Zone (Terminals 10 and 13) *must* be wired with an end-of-line resistor.

- **Silent Panic.** Neither keypad panic nor wired panic zone will activate the bell. A panic alarm will be transmitted to the central station if a panic code is programmed.
- **Audible Panic.** Either keypad panic or wired panic zone will activate the bell. A panic alarm will be transmitted to the central station if a panic code is programmed.
- **Split Reporting.** Both Telephone No. 1 and Telephone No. 2 must be programmed. Alarms, troubles, restores, etc. will report to Telephone No. 1. Openings and Closings will report to Telephone No. 2.
- **24-Hour Test.** The communicator will transmit the programmed code to the central station every 24 hours if no other report has been made. (Any report will reset the internal 24-hour test timer.)
- **Bell Test.** The alarm bell will activate for 1 second each time the system is armed.

Select the desired system options from the following table:

SYSTEM OPTIONS	ENTER
Silent Panic	0
Audible Panic	1
Silent Panic; Split Reporting	2
Audible Panic; Split Reporting	3
Silent Panic; 24-Hour Test	4
Audible Panic; 24-Hour Test	5
Silent Panic; Split Reporting; 24-Hour Test	6
Audible Panic; Split Reporting; 24-Hour Test	7
Silent Panic; Bell Test	8
Audible Panic; Bell Test	9
Silent Panic; Split Reporting; Bell Test	A
Audible Panic; Split Reporting; Bell Test	B
Silent Panic; 24-Hour Test; Bell Test	C
Audible Panic; 24-Hour Test; Bell Test	D
Silent Panic; Split Reporting; 24-Hour Test; Bell Test	E
Audible Panic; Split Reporting; 24-Hour Test; Bell Test	F

BLOCK NO. 05: KEYPAD CONDITIONS

This block establishes keypad operating parameters.

Location 1: Emergency Conditions - Select keypad-panic options from the following table:

EMERGENCY CONDITION	ENTER
Enable Police Panic ("P" Buttons)	1
Auxiliary Panic ("A" Buttons) Silent	8
Enable Police Panic; Auxiliary Panic Silent	9

Location 2: Miscellaneous Options

- **Keyswitch.** Select this option to replace the wired Panic Zone (Terminals 10 and 13) with a normally-open momentary keyswitch input.
- **Wired Panic Zone Audible.** Select for audible wired Panic Zone only if Police Panic ("P" Buttons) is silent.
- **Disable Auto-Unbypass.** Program to maintain bypassed zones upon disarming.
- **Arm-Only Code.** Program for User 5 to be an Arm-Only (Service/Maid) Code.

OPTION	ENTER
Keyswitch	1
Wired Panic Zone Audible	2
Disable Auto-Unbypass	4
Keyswitch; Disable Auto-Unbypass	5
Wired Panic Zone Audible; Disable Auto-Unbypass	6
Arm-Only Code	8
Keyswitch; Arm-Only Code	9
Wired Panic Zone Audible; Arm-Only Code	A
Keyswitch; Disable Auto-Unbypass; Arm-Only Code	D
Wired Panic Zone Audible; Disable Auto-Unbypass; Arm-Only Code	E

Location 3: Easy Commands

- **Easy Forced Arm.** Bypasses all unsecured zones and arms the panel by simply pressing the "P/*" Key followed by Key 2. Reports as User 7 if a two-digit transmission is specified.
- **Easy Arming.** Arms the panel by simply pressing the "P/*" Key followed by Key 1. (Disarming still requires the entry of a valid user code.) Easy Arming reports as User 7 if a two-digit transmission is specified.
- **Easy Reset.** This option will permit reset of the following conditions by simply pressing the "P/*" Key: (a) sounder; (b) communications failure; and (c) alarm memory.

EASY COMMAND	ENTER
Easy Forced Arm	1
Easy Arming	2
Easy Forced; Easy Arming	3
Easy Reset	4
Easy Forced Arm; Easy Reset	5
Easy Arming; Easy Reset	6
Easy Forced Arm; Easy Arming; Easy Reset	7

Location 4: Miscellaneous Options

- **Untimed Output On Fire Terminals 19 (+) and 20 (-).** Converts smoke-detector power Terminals 19 and 20 to an untimed output. The Untimed Output is recommended for use with strobes, LEDs, etc. to provide a visual indication of an alarm trip; it follows the bell output but will remain active until the panel is disarmed.
- **Reset Test Timer On Any Transmission.** The test timer will report 12 hours after power-up or after the Dealer Program Mode is exited and, normally, every 24 hours thereafter. Select this option to cancel the daily test report in the event of any other report (opening, closing, etc.). The test transmission will resume at its regular time on the following day (unless any other report is received

that day).

- **Enable Default Program.** Allows the default program to be loaded as instructed (see *Default Program* at the beginning of this section).
- **Disable Answering Machine Download.** (For Eagle 4700DL only.) Program to inhibit downloading to a telephone connected to an answering machine.

OPTION	ENTER
Untimed Output	1
Reset Test Timer	2
Untimed Output; Reset Test Timer	3
Enable Default Program	4
Untimed Output; Enable Default Program	5
Reset Test Timer; Enable Default Program	6
Untimed Output; Reset Test Timer; Enable Default Program	7
Disable A/M Download	8
Untimed Output; Disable A/M Download	9
Reset Test Timer; Disable A/M Download	A
Untimed Output; Reset Test Timer; Disable A/M Download	B
Enable Default Program; Disable A/M Download	C
Untimed Output; Enable Default Program; Disable A/M Download	D
Reset Test Timer; Enable Default Program; Disable A/M Download	E
Untimed Output; Reset Test Timer; Enable Default Program; Disable A/M Download	F

BLOCK NO. 06: ACCOUNT NO. 1

Enter a 3- to 4-digit subscriber account number for Telephone No. 1 in Locations 1 through 4. If a 3-digit number is used, program an "A" in Location 4. (Valid entries are 0-9 and B-F; "A" signifies the end of a number less than 4 digits.)

BLOCK NO. 07: ACCOUNT NO. 2

Enter a 3- to 4-digit subscriber account number for Telephone No. 2 in Locations 1 through 4. If a 3-digit number is used, program an "A" in Location 4. (Valid entries are 0-9 and B-F; "A" signifies the end of a number less than 4 digits.)

Note: Block No. 07 must be programmed if a second telephone number has been programmed for Split or Backup Reporting. If a second telephone number is not used, this block need not be changed from its default value.

BLOCK NO. 08: TIMEOUTS

Location 1: Entry Delay - Entry delay is programmable in 15-second increments. Valid entries are "1" (15 seconds) through "F" (225 seconds). In UL installations, do not program more than 45 seconds.

Location 2: Exit Delay - Exit delay is programmable in 15-second increments. Valid entries are "1" (15 seconds) through "F" (225 seconds). In UL installations, do not program more than 60 seconds.

Location 3: Burglary Bell - Burglary bell timeout is programmable in 3-minute increments. Valid entries are "1" (3 minutes) through "F" (no timeout). "E" gives maximum timeout of 42 minutes. In UL installations, program a timeout of at least 4 minutes.

Location 4: Fire Bell - Fire bell timeout is programmable in 3-minute increments. Valid entries are "1" (3 minutes) through "F" (no timeout). "E" gives maximum timeout of 42 minutes. In UL installations, program a bell timeout of at least 4 minutes.

BLOCK NOS. 09 THROUGH 14: ZONE OPTIONS & ALARM CODES

Block Numbers 09 through 14 establish the operating features and alarm codes for Zones 1 through 6, respectively. For each zone, select features from the Zone Options table and program in Locations 1 and 2. Program the central-station alarm code for each zone in Locations 3 and 4. (If a report is not desired for a particular zone, enter "A" in zone Locations 3 and 4.)

BURGLARY ZONES. The following types of Burglary Zones are selectable:

- **Delayed** - This is the Exit/Entry Zone. When the system is armed, exit delay begins. After exit delay expires, any subsequent violation will initiate entry delay, as indicated by the keypad sounder. If the system is not disarmed within the entry time, an alarm will occur. If the system is armed with Instant Protection, entry delay is cancelled and the Exit/Entry Zone will go into instant alarm when violated.
- **Interior** - All interior zones are follower zones; that is, they have exit delay time upon arming and entry delay time only if a delayed zone (Exit/Entry) is violated first. However, if an interior zone is violated first, it will cause an immediate alarm. All interior zones are automatically bypassed when the INTERIOR Button is pressed (prior to arming, with perimeter-zone protection only).
- **Perimeter** - This is always an instant zone that will cause an immediate alarm if violated when armed.

Burglary-Zone Options. The following Burglary-Zone options are available.

- **Restore** - The programmed restore code will be transmitted after bell timeout (if the loop is restored) or if the system is disarmed during an alarm.
- **Chime** - The keypad will sound a 1-second beep when the zone is violated while disarmed.
- **Abort Delay** - Provides a 15-second delay before dialing, allowing the user to abort the transmission (do not program in UL installations). If this feature is not selected, an unabortable transmission will be initiated immediately upon violation.
- **Day Zone** - The keypad sounder will pulse and the Zone LED will flash as long as this zone is violated while disarmed and the system-trouble code will be transmitted to the central station. (The sounder may be silenced by entry of any valid user code.) When armed, a Day Zone functions as a regular Burglary Zone.

24-HOUR ZONES. The following types of 24-Hour Zones are selectable:

- **Fire** - Use a power supervisory relay on the Fire Zone. Upon detection of the first fire violation, smoke-detector power will be reset for 8 seconds, after which power is restored. A 5-second reset period follows, allowing the smoke detectors to settle. Further violations within a two-minute interval will result in a pulsing bell output, rapid flashing Zone LED, and an immediate report to the central station. (Fire Zones cannot be bypassed and Fire-Zone transmissions cannot be aborted.)

To silence the sounder and bell and reset smoke-detector power, enter any valid user code. If the Fire Zone is still violated within 2 minutes of power reset, the Zone LED will flash slowly to indicate a fire trouble. Smoke-detector power will be automatically reset every 4 minutes thereafter in an attempt to restore the Fire Zone.

In the event of an open fire circuit, the Zone LED will flash slowly and the keypad sounder will pulse, indicating a fire trouble. The system-trouble code and zone code will be transmitted to the central station. (The keypad sounder may be silenced by entry of any valid user code.)

Note: A fire trouble is a *priority* condition that *must be repaired immediately!*

- **24-Hour Alarm** - This zone is always active, whether the system is armed or disarmed. 24-Hour Alarm Zones may be programmed for audible alarm (steady bell) or silent alarm (no bell or keypad indications), with or without restore codes. If programmed for audible alarm, the Zone LED will flash rapidly upon violation and an immediate unabortable transmission will be sent to the central station. These zones may be bypassed, but not unbypassed if a violation exists.
- **24-Hour Trouble** - This zone is always active, whether the system is armed or disarmed. 24-Hour Trouble Zones may be programmed for audible trouble (pulsing keypad sounder) or silent trouble, with or without restore codes. Upon violation, the Zone LED will flash slowly. The trouble condition must exist for 15 seconds before a report will be initiated. The keypad indication and sounder (if audible) will clear when the zone is restored. These zones may be bypassed, but not unbypassed if a violation exists.

Note: To silence the sounder, enter any valid user code.

ZONE OPTIONS. Program options for each zone. Select options from the following table and program corresponding entry in Locations 1 and 2.

OPTIONS	ENTER
<u>BURGLARY ZONES</u>	
Perimeter	10
Perimeter; Restore	11
Perimeter; Day Zone	12
Perimeter; Day Zone; Restore	13
Perimeter; Chime	14
Perimeter; Chime; Restore	15
Perimeter; Abort Delay	18
Perimeter; Restore; Abort Delay	19
Perimeter; Day Zone; Abort Delay	1A
Perimeter; Day Zone; Restore; Abort Delay	1B
Perimeter; Chime; Abort Delay	1C
Perimeter; Chime; Restore; Abort Delay	1D
Delayed	20
Delayed; Restore	21
Delayed; Chime	24
Delayed; Chime; Restore	25
Interior	40
Interior; Restore	41
Interior; Chime	44
Interior; Chime; Restore	45
Interior; Abort Delay	48
Interior; Restore; Abort Delay	49
Interior; Chime; Abort Delay	4C
Interior; Chime; Restore; Abort Delay	4D
<u>24-HOUR ZONES</u>	
Alarm	81
24-Hour Trouble	82
Fire	84
Hold-Up Alarm (no LED, sounder or bell)	89
Silent Trouble (LED indication only)	8A
Alarm; Restore	91
24-Hour Trouble; Restore	92
Fire; Restore	94
Hold-Up Alarm; Restore	99
Silent Trouble; Restore	9A

ALARM CODES. Program an alarm code for each zone in Locations 3 and 4. (Also refer to *BLOCK NO. 04: COMMUNICATOR INFORMATION*, Data Format.) If a report is not desired for a specific zone, enter "A" in Locations 3 and 4 for that zone.

Standard Format. Enter the single-digit alarm code in Location 3. The entry in Location 4 will not be used. *Example:* For the desired transmission "123 2" (Account No. 123; Alarm Code 2), enter a "2" in Location 3. Any value in Location 4 will not be used.

Extended Format. Enter the first digit of the alarm code in Location 3 and the second digit in Location 4. *Example:* For the desired transmission "123 3" then "333 4", enter a "3" in Location 3 and a "4" in Location 4.

Partial Extended. Enter the desired digit in Locations 3 and 4 to generate a single round alarm transmission and an extended transmission for all system conditions, such as restores. *Example:* For the desired transmission "Alarm 123 3"; "Restore 123 E"; then "EEE 3", enter a "3" in both Locations 3 and 4.

4/2. Enter the first digit of the alarm code in Location 3 and the second digit in Location 4. *Example:*

To transmit "4765 32", enter a "3" in Location 3 and a "2" in Location 4.

BLOCK NO. 15: AMBUSH; AC FAILURE

(Refer to Zone *ALARM CODES*, above, for data format programming information.)

Locations 1 and 2: Ambush - Program the *Ambush* alarm code in Locations 1 and 2. Note that an Ambush transmission is not abortable. If *Ambush* will not be transmitted, enter "A,A" in Locations 1 and 2.

Locations 3 and 4: AC Failure - Program the *AC Failure* alarm code in Locations 3 and 4. Note that AC Failure reports will be transmitted 15 minutes after detection. If *AC Failure* will not be transmitted, enter "A,A" in Locations 3 and 4. If a Restore Code is programmed, an *AC Restore* will be transmitted immediately upon detection when ac power is restored.

BLOCK NO. 16: PANIC; LOW BATTERY

(Refer to Zone *ALARM CODES* for data format programming information.)

Locations 1 and 2: Panic - Program the *Police Panic/Wired Panic* alarm code in Locations 1 and 2. This alarm code will be transmitted for either Keypad Police Panic or Wired Panic. Panic transmissions are immediate and not abortable. To disable Panic, enter "A,A" in Locations 1 and 2.

Locations 3 and 4: Low Battery - Program the *Low-Battery* alarm code in Locations 3 and 4. A Low-Battery report will be transmitted within 4 minutes after detection. If a Restore Code is programmed, a *Low-Battery Restore* report will be transmitted within 4 minutes after detection of a good battery condition. If *Low Battery* will not be transmitted, enter "A,A" in Locations 3 and 4.

BLOCK NO. 17: OPENINGS; CLOSINGS; 24-HOUR TEST

Location 1: Opening Code - Program a single-digit *Opening Code* in Location 1 to report on disarming. Enter an "A" if opening reports are not required. **Note:** If a data format other than Standard Format is programmed, the second digit transmitted will be the user number. See *BLOCK NO. 5, Location 4: Miscellaneous System Options*.

Location 2: Closing Code - Program a single-digit *Closing Code* in Location 2 to report on arming. Enter an "A" if closing reports are not required. **Note:** If a data format other than Standard Format is programmed, the second digit transmitted will be the user number.

Locations 3 and 4: 24-Hour Test Code - Program the *24-Hour Test Code* in Locations 3 and 4. (Enter "A,A" to disable the 24-Hour Test.) Any valid transmission will reset the 24-Hour Test timer. See *BLOCK NO. 05, Location 4*.

BLOCK NO. 18: BYPASS; RESTORE; TROUBLE

Location 1: Bypass Code - Program a single-digit *Bypass Code* in Location 1 to report a bypass on arming. If bypasses will not be transmitted, enter an "A" in Location 1. **Note:** If a two-digit data format has been programmed, the Bypass Code will be followed by the programmed second digit of the Zones Code.

Location 2: Restore Code - Program a single-digit *Restore Code* in Location 2 to report Burglary Zones or 24-Hour Zones programmed for restore reports. If restore reports will not be transmitted, program an "A" in Location 2. **Note:** If a two-digit data format has been programmed, the Restore Code will be followed by the programmed second digit of the Zones Code.

Location 3: Trouble Code - Program a single-digit *Trouble Code* in Location 3 to report Day-Zone troubles and any fire troubles. **Note:** If a two-digit format has been programmed, the Trouble Code will be followed by the second digit of the respective Zones Code.

Location 4: NUMBER OF RINGS - (For Eagle 4700DL only.) Program the number of rings for the panel to pick up a remote download. To disable downloading, leave these locations blank. See *BLOCK NO. 05, Location 4*. **Note:** Leave blank for UL installations.

BLOCK NO. 19: KEYPAD PANIC

Program the *Fire Panic* alarm code in Locations 1 and 2. To disable Fire Panic, enter "A,A" in Locations 1 and 2. Program the *Auxiliary Panic* alarm code in Locations 3 and 4. To disable Auxiliary Panic, enter "A,A" in Locations 3 and 4. **Note:** Fire Keypad Panic is audible only. The wired Panic Zone is silent unless programmed otherwise (See *BLOCK NO. 5: EMERGENCY CONDITIONS*)

BLOCK NO. 20: CHIME TIME

Location 1: Chime Time - Program Chime Time in units of 150 milliseconds (.15 second). For example, for a chime time of 1 second, program the nearest value of "7" ($7 \times .15 \text{ sec} = 1.05 \text{ sec}$). Maximum programmable time is 2.25 seconds ("F").

Locations 2 through 4: Reserved - These locations are reserved for possible future use.

BLOCK NO. 21: AUTO-DOWNLOAD ID NUMBER; NO END-OF-LINE RESISTOR

Locations 1-2: (For Eagle 4700DL only.) Enter a two-digit Auto-Download Identification Number (01–99). See *Section 3. PROGRAMMING: Downloading from a Computer*. **Important:** Enter the *tens* digit in *Location 2* and the *units* digit in *Location 1*. For example, to program an ID number of "53", enter the "3" in *Location 1* and the "5" in *Location 2*.

Location 3: No End-of-Line Resistor, Zones 5 and/or 6

NO EOL RESISTOR	ENTER
Zone 5	1
Zone 6	2
Zones 5 and 6	3

Location 4: No End-of-Line Resistor, Zones 1–4

NO EOL RESISTOR	ENTER
Zone 1	1
Zone 2	2
Zones 1 and 2	3
Zone 3	4
Zones 1 and 3	5
Zones 2 and 3	6
Zones 1, 2 and 3	7
Zone 4	8
Zones 1 and 4	9
Zones 2 and 4	A
Zones 1, 2, and 4	B
Zones 3 and 4	C
Zones 1, 3 and 4	D
Zones 2, 3 and 4	E
Zones 1, 2, 3 and 4	F

BLOCK NO. 00: DEALER PROGRAM CODE

The default Dealer Program Code is 4,7,0,0. Program your own 4-digit code (digits 0-9) in Locations 1 through 4 to prevent unauthorized access to the Dealer Program Mode.

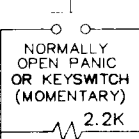
EAGLE4700/DL **ALARM LOCK SYSTEMS INC.** **345 BAYVIEW AVE.** **AMITYVILLE, N.Y. 11701**

This equipment should be installed in accordance with the National Fire Protection Association's Standard 74 (National Fire Protection Association, Batterymarch Park, Quincy, MA 02269), and local codes. Printed information describing proper installation, operation, testing, maintenance, evacuation planning, and repair service is to be provided with this equipment. Refer to Operation and Installation manuals O155 and W566 respectively. UL Listed Limited Energy Cable is required.

JP1 JP2
 ○ ○
 DEFAULT
 RESET
 (SEE NOTE 3)

WARNING

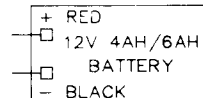
To prevent risk from electrical shock, deenergize the System Control Unit and disconnect the telephone lines before servicing this unit.



(SEE NOTE 5)

F1 BATTERY
 4 AMPS

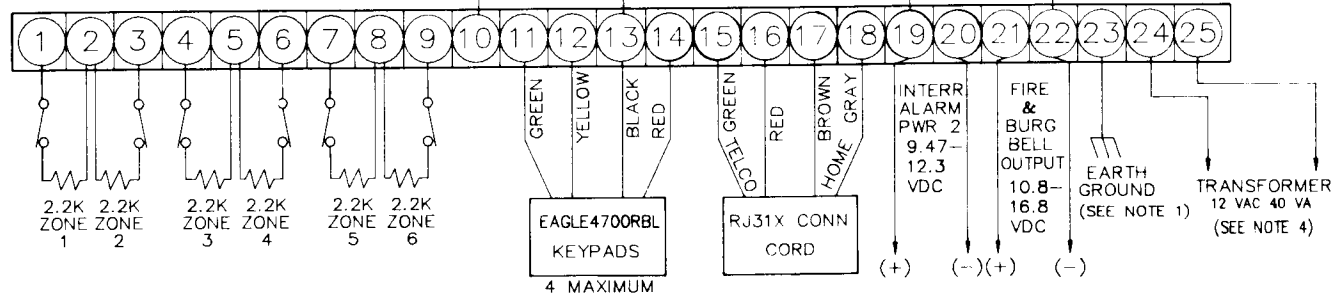
F2 AUX POWER
 1 AMP



ALBAT4 OR ALBAT6

F3 BELL POWER
 3 AMPS

AUX POWER
 12.0-12.7 VDC Reg.
 500mA. Max.
 (SEE NOTE 2)

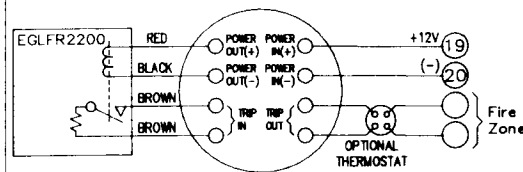


WARNING

- NOTE: 1. GROUNDING—Connect 16ga. wire, 16 feet max., to cold water pipe ground.
- NOTE: 2. AUX. POWER is 500mA. max., including keypad.
- NOTE: 3. Default Programming — with power disconnected, temporarily connect JP1 to JP2. Reapply power, then disconnect jumper. For further information consult the instruction manual.
- NOTE: 4. Do not connect transformer to a switched outlet.
- NOTE: 5. Fuse F1 is non replaceable — if blown, return control unit to manufacturer for repair.
- NOTE: 6. Battery standby is a minimum of 4 hours followed by 4 minutes of alarm. Expected service life of battery is 5 years.
- NOTE: 7. The system must be tested once per week in the AC Battery and the Battery-Only modes.

The unit includes an alarm verification feature that will result in a delay of the system alarm signal from the indicated circuits. The total delay (control unit plus smoke detector) shall not exceed 60 seconds. No other initiating devices shall be connected to these circuits unless approved by the local authority having jurisdiction.

WIRING BETWEEN 4-WIRE SMOKE DETECTOR AND CONTROL-CENTER TERMINALS



ALARM LOCK LIMITED WARRANTY

ALARM LOCK Systems, Inc. (ALARM LOCK) warrants its products to be free from manufacturing defects in materials and workmanship for two years following the date of manufacture. ALARM LOCK will, within said period, at its option, repair or replace any product failing to operate, without charge to the original purchaser or user.

In case of defect, contact the security professional who installed and maintains your security system. ALARM LOCK shall have no obligation under this warranty, or otherwise, if the product has been repaired by others, improperly installed, improperly used, abused, altered, damaged, subjected to accident, nuisance, flood, fire or acts of God, or on which any serial numbers have been altered, defaced or removed. ALARM LOCK will not be responsible for any dismantling, reassembly or reinstallation charges.

In order to exercise the warranty, the product must be returned by the user or purchaser, shipping costs prepaid and insured to ALARM LOCK. After repair or replacement, ALARM LOCK assumes the cost of returning products under warranty.

There are no warranties, express or implied, which extend beyond the description on the face thereof. There is no express or implied warranty of merchantability or a warranty of fitness for a particular purpose. Additionally, this warranty is in lieu of all other obligations or liabilities on the part of ALARM LOCK.

Any action for breach of warranty, including but not limited to any implied warranty or merchantability, must be brought within the six months following the end of the warranty period. In no case shall ALARM LOCK be liable to anyone for any consequential or incidental damages for breach of this or any other warranty, express or implied, even if the loss or damage is caused by the seller's own negligence or fault.

This warranty contains the entire warranty. It is the sole warranty and any prior agreements or representations, whether oral or written, are either merged herein or are expressly cancelled. ALARM LOCK neither assumes, nor authorizes any other person purporting to act on its behalf to modify, to change, or to assume for it, any other warranty or liability concerning its products.

In no event shall ALARM LOCK be liable for an amount in excess of ALARM LOCK's original selling price of the product, for the loss or damage, whether direct, indirect, incidental, consequential, or otherwise arising out of any failure of the product. Seller's warranty, as hereinabove set forth, shall not be enlarged,

diminished or affected by, and no obligation or liability shall arise or grow out of, Seller's rendering of technical advice or service in connection with Buyer's order of the goods furnished hereunder.

ALARM LOCK RECOMMENDS THAT THE ENTIRE SYSTEM BE COMPLETELY TESTED WEEKLY.

Warning: Despite frequent testing, and due to, but not limited to, any or all of the following: criminal tampering, electrical or communications disruption, it is possible for the system to fail to perform as expected. ALARM LOCK does not represent that the product/system may not be compromised or circumvented; or that the product or system will prevent any personal injury or property loss by burglary, robbery, fire or otherwise; nor that the product or system will in all cases provide adequate warning or protection. A properly installed and maintained alarm or lock may only reduce risk of burglary, robbery, fire or otherwise but it is not insurance or a guarantee that these events will not occur. **CONSEQUENTLY, SELLER SHALL HAVE NO LIABILITY FOR ANY PERSONAL INJURY, PROPERTY DAMAGE, OR OTHER LOSS BASED ON A CLAIM THE PRODUCT FAILED TO GIVE WARNING.** Therefore, the installer should in turn advise the consumer, and the consumer is hereby advised, to take any and all precautions for his or her safety including but not limited to, fleeing the premises and calling police or fire department, in order to mitigate the possibilities of harm and/or damage.

ALARM LOCK is not an insurer of either the property or safety of the user's family or employees, and limits its liability for any loss or damage including incidental or consequential damages to ALARM LOCK's original selling price of the product regardless of the cause of such loss or damage. If the user wishes to protect itself to a greater extent, ALARM LOCK will, at user's sole cost and expense, obtain an insurance policy to protect the user, supplemental to user's own policy, at a premium to be determined by ALARM LOCK's insurer upon written notice from user by Certified Mail, Return Receipt Requested, to ALARM LOCK's home office address, and upon payment of the annual premium cost by user.

This warranty shall be construed according to the laws of the State of New York. Some states do not allow limitations on how long an implied Warranty lasts or do not allow the exclusion or limitation of incidental or consequential damages, or differentiate in their treatment of limitations of liability for ordinary or gross negligence, so the above limitations or exclusions may not apply to you. This Warranty gives you specific legal rights and you may also have other rights which vary from state to state.