



|

*RSVP

MODEL 5100

Control/Communicator

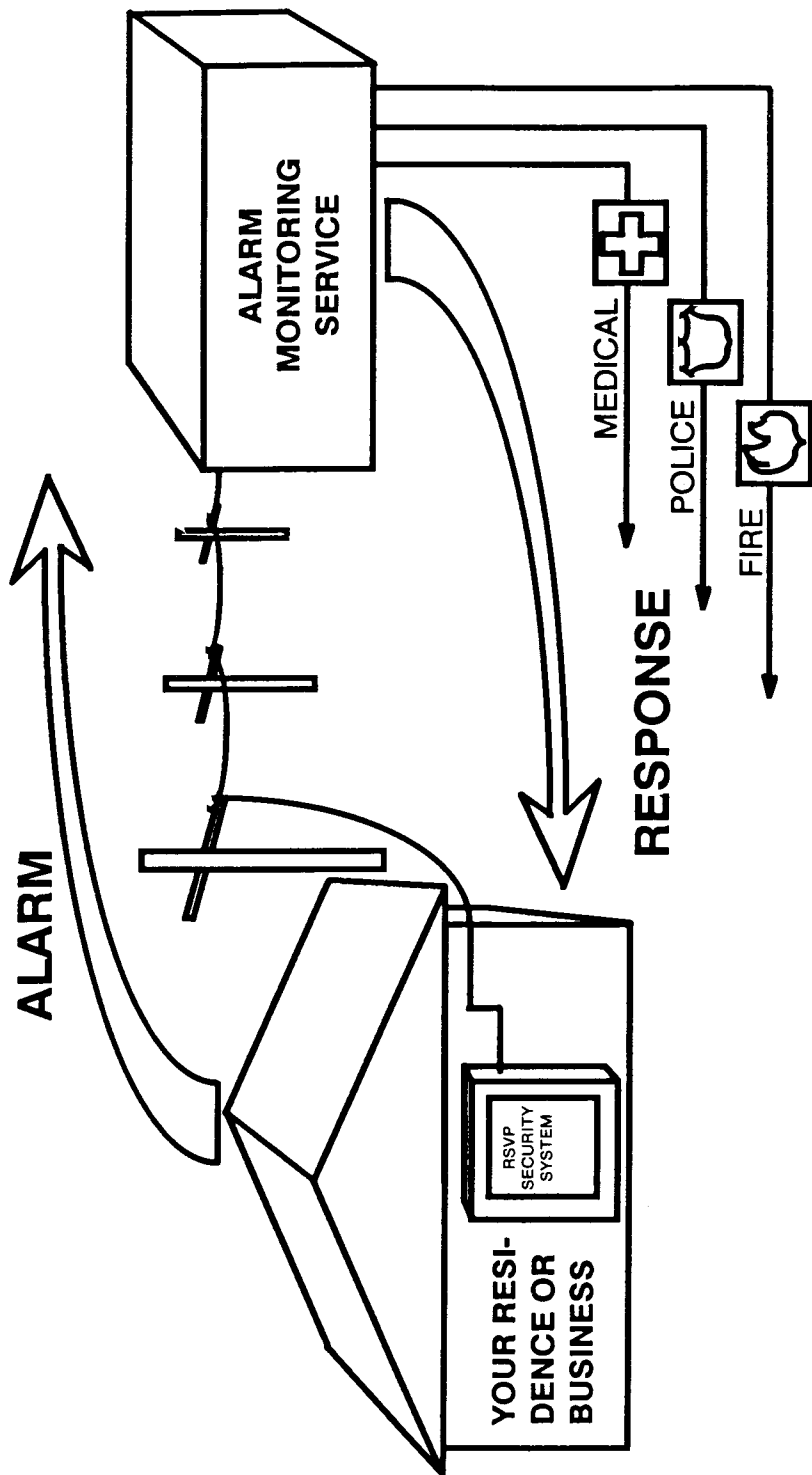
Using Your Alarm System

|

STANLEY ELECTRONICS

22700 Heslip Dr. • Novi, MI 48375

(313) 349-3990



CONGRATULATIONS

Thank you for purchasing the Stanley RSVP Model 5100 Alarm System. This system has been designed to provide you with many years of reliable operation. It is one of the most advanced and easy-to-use controls available today.

OPERATION

This booklet will explain the various features that are incorporated in your RSVP Model 5100. Our installer has filled in the blanks and checked the boxes showing the features of your installation.

The next two pages are the ones you will use most often - until operation of the system becomes automatic to you.

HELP

If you need help operating or understanding your system, please call us at

If you want to test your system, call our Central Station at

CONTENTS

Arming the System	Page 2
Disarming the System	Page 2
Resetting the Alarm	Page 3
Instant Arming the System	Page 4
Options	Pages 5-7
Reading the Lights	Page 8
Testing Your System	Page 9
Phone Trouble	Page 9
Smoke Detector Placement	Page 10
Emergency Evacuation	Page 11
Terms we use	Page 12
Warranty	Page 13

Quick! How do you work it?

TURNING ON THE ALARM SYSTEM ("ARMING")

1. Be sure the GREEN *Ready* LIGHT is ON.

- * If it is not on, the RED *Zone* LIGHTS will indicate which zones are violated (door open, someone moving in the presence of a motion detector, etc.)
- * The Zone Lights go off automatically after 5 minutes as a security measure. To turn them on again, press any key.
- * All zones must be normal (or bypassed) before you can arm the system

2. ENTER your 4-digit COMBINATION.

- * Do not pause more than a second or two between digits or the Control will reject the combination.
- * If you make a mistake, wait three seconds and start over.

3. CHECK that the RED *Armed* LIGHT has come ON.

- * The keypad will beep twice as an additional indication that the system is armed.

4. EXIT through any TIME DELAY DOOR within _____ seconds.

- * Doors in the zones checked below are Time Delay Doors.
- * If you have the Automatic Home option, you may remain in the building after arming. (See page 6.)

TURNING OFF THE ALARM SYSTEM ("DISARMING")

1. ENTER ONLY THROUGH A TIME DELAY DOOR.

- * The Keypad will _____ will not _____ beep every second to remind you to disarm the system.

2. WITHIN _____ SECONDS, ENTER your 4-digit COMBINATION.

3. CHECK that the RED *Armed* LIGHT goes OFF.

- * If the Red Armed Light does not go off, wait three seconds and re-enter your combination.

AC POWER	ZONE 1
READY	ZONE 2
ARMED	ZONE 3
TROUBLE	ZONE 4
REPORT	ZONE 5
SERVICE	ZONE 6
	ZONE 7
	ZONE 8
	ZONE 9

KEYPAD LIGHTS

AREAS PROTECTED

RESETTING THE ALARM SYSTEM

after an alarm.

1. ENTER your 4-digit COMBINATION.

- * This will silence the siren (bell) and disarm the system.
- * The Red *Zone* light(s) and the Green *Ready* light will continue to flash to help you remember where the violation(s) occurred.
- * Write down the numbers of the violated zones to help us service you.
- * Press the 4 and 8 keys at the same time to clear these lights.

there's more

more on how you work It

REARMING THE SYSTEM after an Alarm.

1. The GREEN *Ready* LIGHT must be ON

* If the Green *Ready* light is not on and a Red *Zone* light is on, it means that the violated zone has not been restored.

* If you cannot restore the violated zone, you may be able to bypass the zone in order to arm the rest of the system. See Automatic Bypass and Manual Bypass on page 5.

INSTANT ARMING THE SYSTEM

If you are going to be home, you may wish to convert your "time delayed" zones to "instant" zones. This will prevent intruders from entering undetected during the normal "entry delay" period.

CAUTION. When you have armed it this way, you will not be able to enter or exit through any exterior door or walk through any protected areas without setting off the alarm. Also, if anyone with a key comes in while the entry delay is disabled, the alarm will be set off.

1. When arming the system, hold down the **last digit** of your combination for 3 seconds. This will cause the delayed zones to become instant zones.

* The Red *Armed* light will flash to warn you that there are no delays.

2. When you leave, you must disarm, then arm the system again in order to turn on the "entry delay" for when you return.

Options

Many of the features of the RSVP Model 5100 are optional. They are enabled only if appropriate for your installation. Regulations and system requirements may not allow some options. Your installer has checked those which are enabled in your system.

☐

Zone Chime. The keypad beeps each time a designated zone is tripped. This can be used as a door annunciator. (You can turn off this feature by pressing "####". You can turn it back on the same way. The keypad will beep on the fourth "#".)

☐

Automatic Bypass. Any zone checked below which is violated at the time of arming will be automatically disabled. The Red *Zone* and Green *Ready* lights will continue to flash to remind you that although the system is armed, no protection is being afforded in the disabled zone(s).

ZONE

☐

1

Manual Bypass. Any zone checked at the left which is violated at the time of arming can be disabled using the following procedure:

☐

2

1. Enter "#", your combination*, then the zone number. The Red *Zone* and Green *Ready* lights will continue to flash to remind you that although the system is armed, no protection is being afforded in the disabled zone.

☐

3

☐

4

☐

5

2. Repeat this process for each zone that you wish to bypass.

☐

6

3. When bypassing is complete, arm the system by entering your combination.

☐

7

4. You may remove a bypass by entering "#", your combination*, then the zone number. All bypasses are automatically removed when the system is disarmed.

☐

8

☐

9

*User combinations, when they are created, may or may not be given the ability to do Manual Bypass. The combination you use must have that ability in order to use the above procedure.

more Options

☐

Automatic Home. The system will automatically determine whether you are at home or away.

If you arm the system, but do not exit the premises through a time-delay door during the "exit" period, the control will **automatically bypass all interior zones**. This allows you free movement within the premises. Authorized persons entering through a time-delay door will have _____ seconds to disarm the system. Rearming and leaving through a delay door will restore interior protection.

You can automatically bypass all interior zones and change entry/exit delays to "instant". When you arm your system, hold the last digit of your combination down for 3 seconds. Do not exit the premises. To allow authorized people to enter or leave the premises, you must first disarm the system. Rearming and exiting through a "delay" door will restore the delays and interior protection.

☐

Duress Code. A special 4-digit code can be used to arm or disarm your system when an intruder forces you to turn the system on or off while he is watching. Using this code will cause normal arming and disarming indications, but will also send a special signal to our monitoring station. The Duress Code is listed on the card with the other user combinations.

☐

Panic Button. Pressing the "*" and "#" keys at the same time will cause an audible _____ silent _____ alarm. The Green Ready light and the Red Zone 9 light will _____ will not _____ flash when these two keys are pressed. A report will _____ will not _____ be sent to the central station. This feature is active whether armed or disarmed.

☐

Audibles. The audible device(s) connected to your system will sound for _____ minutes when the system is tripped unless you silence it by entering your combination. The devices will make the following sounds:

Fire _____ tone
Panic _____ tone
Burglary _____ tone
Other _____ tone

☐

Smoke Detectors will cause the "Fire" sound to occur. A Red Zone light will indicate which one has tripped.

To reset:

1. Enter your regular combination to silence the audible device(s).

☐ 2. Enter the code to reset the detector.

OR

☐ 2. Push the Fire RESET button to reset the sensors.

3. Press "4" and "8" at the same time to clear the keyboard lights.

☐

24-Hour Monitoring. Your system will transmit alarm signals to our Central Station. Transmission will occur Immediately _____ or after a _____ second delay. If your system is set for a delay, you may prevent any transmission from being sent by disarming the system before the delay expires.

☐

Standby Battery. During power failures your system will switch to its standby battery. The Green AC light will go out whenever the system is running on the battery.

If the outage lasts more than 15 minutes, the Yellow Service light will come on and the Green Ready light will flash to let you know about the extended power failure in case you need to check such devices as freezers for damage. To turn these lights off, press the "4" and "8" keys at the same time.

The battery should be replaced every 3 to 5 years. Replace with a 12 volt, 4 ampere-hour battery.

☐

Daily Battery Check. Your system will automatically test its battery once each day. During this test the Green AC light will be off. At the end of the 5-minute test, all lights will return to normal. If the test fails, the Yellow Service light will be on, indicating that service is required.

☒

Siren/Bell Test. Pressing "2" and "9" at the same time will test the sirens or bells. Release the keys to stop the test. No signal will be sent to our Central Station during the test.

reading the Lights

ZONE 1 - 9

OFF - Normal state. Zone not violated.
ON - Zone violated while system is disarmed.
FLASHING SLOW - Alarm Condition or Alarm Memory. Disarm to stop audible alarm. Press 4 and 8 to clear Alarm Memory.
FLASHING FAST - Zone is temporarily bypassed. To remove bypass, repeat bypass procedure or disarm system.

AC POWER

ON - AC power supplied, battery charger working.
OFF - Power interruption or daily battery test going on.

READY

ON - System normal and ready to be armed.
OFF - Zone in violation.
FLASHING - Ready to be armed, but a warning condition exists, such as AC power loss, service required or zone(s) bypassed. Press any key to reactivate the Zone Lights.

ARMED

ON - System armed
OFF - System not armed.
FLASHING - System armed with Delay Zones converted to Instant Zones.

TROUBLE

OFF - No trouble detected.
ON - Trouble (bad connection, short, etc.) in the wiring from detection devices. Call us for service.
FLASHING FAST - A supervised circuit is bypassed.
FLASHING SLOW - An alarm from a supervised zone has been acknowledged, but the condition still exists.

REPORT

OFF - Normal State
ON - The control unit is communicating with the central station.
FLASHING - The control unit has failed to communicate with the central station after repeated attempts. Press 4 and 8 to clear. Call us for service.

SERVICE

OFF - Normal state.
ON - Service is required. Low battery, battery test failure, blown fuses, AC power loss longer than 15 minutes. (Call us for service. Press 4 and 8 to clear if trouble condition is corrected.)
FLASHING - On start-up, self-test failure. Press 4 and 8. If the light does not clear, call us for service.

Test your system every week

Test your siren or bell. Press "2" and "9" at the same time. The siren or bell should sound as long as you hold the two keys down. No signal will be sent to the Central Station during this test.

Call our central station at _____

It is best to schedule system tests for a weekend. When calling, you must properly identify yourself. Then trip the alarm system by any method you choose (pressing the panic button, * and #, is simplest). The yellow report light will come on briefly when your alarm system is talking to our monitoring station computer. Wait one minute after the light goes off, then call the central station to confirm a successful test and let them know you are through testing.

If you have telephone trouble:

First, unplug the alarm system from its telephone jack to determine if the trouble is being caused by the alarm system. The jack is located _____

If the trouble goes away when you unplug the alarm, call us for service. If not, call the telephone company.

Always test your system after the telephone repair person has finished to be sure they have not disconnected your alarm system from the telephone network.

TELEPHONE LINE PROBLEMS

In the event of telephone operational problems, disconnect the control/communicator by removing the plug from the RJ31X/RJ38X jack. We recommend that your certified installer demonstrates disconnecting the phones on installation of the system. Do not disconnect the phone connection inside the control/communicator. Doing so will result in the loss of your phone lines. If your regular phone works correctly after the control/communicator has been disconnected from the phone lines, the control/communicator has a problem and should be returned for repair.

If, upon disconnection of the control/communicator, there is still a problem on your line, notify the telephone company that they have a problem and request prompt repair service. The user may not under any circumstances (in or out of warranty) attempt any service or repairs on the system. It must be returned to the factory or an authorized service agency for all repairs.

TO THE INSTALLER

Regular maintenance and inspection (at least annually) by the installer and frequent testing by the user are vital to continuous satisfactory operation of any alarm system.

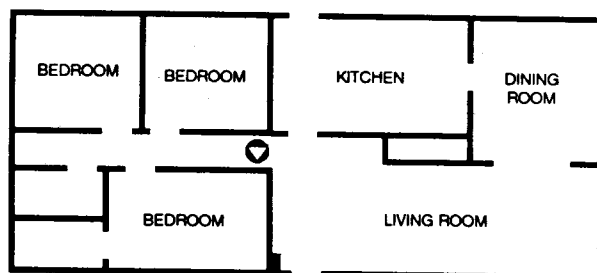
The installer should assume the responsibility for developing and offering a regular maintenance program to the user as well as acquainting the user with the proper operation and limitations of the alarm system and its component parts. Recommendations must be included for a specific program of frequent testing (at least weekly) to insure the systems's proper operation at all times.

Smoke Detector Placement

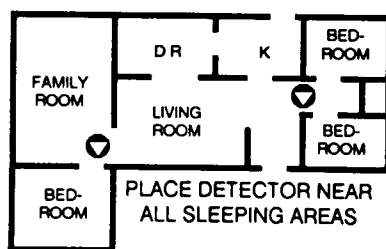
We subscribe to the recommendations for the number and placement of smoke and/or heat detectors found in the National Fire Protection Association's Standard #74, shown below.

For the best early warning, fire detection devices should be installed in all rooms and areas of the house. A smoke detector should be installed in each separate sleeping area, (in the vicinity of, but outside of the bedrooms), and heat or smoke detectors in living rooms, dining rooms, bedrooms, kitchens, hallways, attics, furnace rooms, closets, utility and storage rooms, basements, and attached garages.

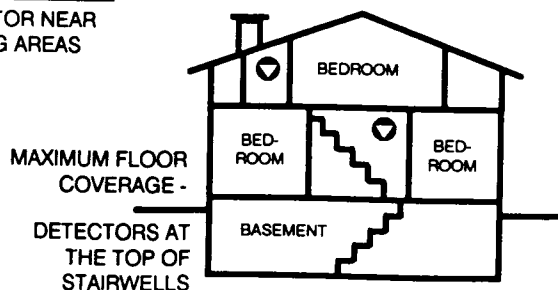
Note: "Approval of the control's burglar alarm functions does not fall within the (California) State Fire Marshal's area of jurisdiction.



BEST RESIDENTIAL DETECTOR PLACEMENT BETWEEN BEDROOMS AND THE REST OF THE HOUSE



PLACE DETECTOR NEAR ALL SLEEPING AREAS



MAXIMUM FLOOR COVERAGE -

DETECTORS AT THE TOP OF STAIRWELLS

Emergency Evacuation

Every household should establish and regularly practice an escape plan in the event of fire. The following steps, recommended by the National Fire Protection Association, can be used as a guide in developing your own emergency plan.

Plan on your detector or your alarm system sounders waking all occupants.

Determine two means of escape from each room, especially the bedrooms, since most fires occur at night when everyone is asleep. One escape path should lead to a door that permits normal exit from the house. The other may be a window that opens easily to use if the primary path is unpassable. An escape ladder should be stationed at the window if it is too high off the ground to jump safely.

Sketch a floor plan, showing doors, windows, stairs, and rooftops that can be used for escape. Indicate escape routes for each room. (See examples below.) Post copies of the sketch in each room. Remember to keep these escape routes free from obstructions.

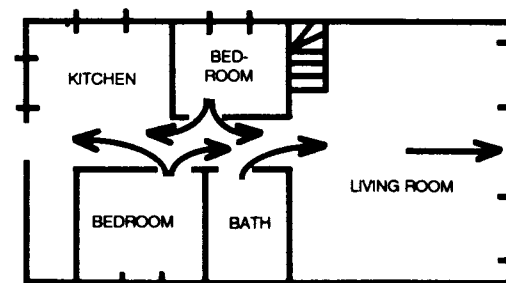
Keep all bedroom doors shut while the occupants are asleep. This will prevent deadly smoke from entering the rooms while you escape.

Establish a meeting place outdoors, away from the house, where everyone can gather and account for those missing. Choose someone to notify the authorities. Choose someone to assure that nobody returns to the house; many die going back.

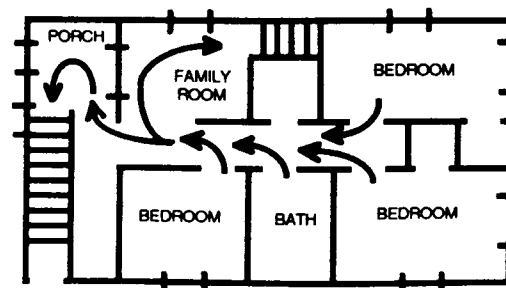
Escape quickly. Don't panic.

Before you open a door, check to see if it is hot. If it is hot, don't open it, but use an alternate escape route. Even if the door is cool, use your shoulder to open it cautiously. Be ready to slam it closed if smoke or heat rushes in.

When moving through a smoky area, stay as close to the floor as possible. Crawl and hold your breath.



FIRST FLOOR



SECOND FLOOR

Terms we use

BYPASS - To take a zone out of the circuit when it malfunctions so that the rest of the system can be armed. This might be caused by something like a window that won't close all the way or by a malfunctioning sensing device. A bypassed zone is not protected.

CENTRAL STATION - The office that your alarm system calls when there is an alarm. Signals are sent which contain information about the nature of the alarm condition. This allows the dispatcher on duty to know how best to respond.

VIOLATION - A zone is **violated** when any of its sensing devices is tripped. It could be an open door, an open window, someone moving about in the presence of a motion sensor, or something standing on a pressure pad. It could also be caused by the malfunctioning of one of these devices.

ZONE - One of the protected areas of your premises. Violations are reported to the central station by zone. Lights on the keypad indicate which zone(s) are violated.

WARRANTY

All Stanley Electronics Security products carry a twenty-four (24) month warranty against defects in workmanship or material. This warranty begins at the date of manufacture, for twenty-four months. Stanley Electronics warrants our product only to our authorized distributors and dealers, and not to the end customer. If you have questions about this warranty, please ask your dealer to determine the nature and scope of his warranty. Stanley Electronics does not assume, and is not responsible for, any real or consequential damages from claims against the performance of our product, nor is it liable for any costs related to loss of life, property, or revenue. Further, Stanley Electronics is in no way responsible for the installation of our product, and will assume no costs related to removal or re-installation.

Stanley Electronics' Warranty is in lieu of all other warranties, expressed or implied.

THE LIMITATIONS OF YOUR ALARM SYSTEM

While your system is an advanced design security system, it does not offer guaranteed protection against burglary or fire. Any alarm system, whether commercial or residential, is subject to compromise or failure-to-warn for a variety of reasons:

- * Intruders may gain access through unprotected openings or have the technical sophistication to bypass an alarm sensor or disconnect an alarm warning device.
- * Intrusion detectors (e.g. passive infrared detectors), smoke detectors, and many other sensing devices will not work without power. Devices powered by AC will not work if their AC power supply is off for any reason and their backup batteries are missing, dead, or not put in properly.
- * Alarm warning devices such as sirens, bells or horns may not alert people or wake up sleepers if they are located on the other side of closed or partly closed doors. If warning devices are on a different level of the residence from the bedrooms, then they are less likely to waken or alert people inside bedrooms.
- * Telephone lines needed to transmit alarm signals from a premise to a central monitoring station may be out of service or temporarily out of service. Telephone lines are also subject to compromise by sophisticated methods of attack.
- * Smoke detectors used in conjunction with the system may not sense fires that start where smoke cannot reach the detectors, such as in chimneys, in walls, or roofs, or on the other side of closed doors. Smoke detectors also may not sense a fire on another level of the residence or building. A second floor detector, for example, may not sense a first floor or basement fire. Finally, smoke detectors have sensing limitations. No smoke detector can sense every kind of fire every time. In general, detectors may not always warn you about fires caused by carelessness and safety hazards, like smoking in bed, violent explosions, escaping gas, improper storage of flammable materials, overloaded electrical circuits, children playing with matches, or arson.

The most common cause of an alarm system not functioning properly when an intrusion or fire occurs is inadequate maintenance. Your alarm system should be tested weekly to make sure all sensors are working properly. The master console and remote keypad(s) should be tested as well.

Installing an alarm system may make you eligible for lower insurance rates, but an alarm system is not a substitute for insurance. Homeowners, property owners, and renters should continue to insure their lives and property

Your operating Combinations are:

User Combination #2	___	___	___	___
User Combination #3	___	___	___	___
User Combination #4	___	___	___	___
User Combination #5	___	___	___	___
User Combination #6	___	___	___	___
Duress Code (#7)	___	___	___	___

(User Combination #1 is used as a service combination.)

Keep this card in a secure place, away from the arming station.

Changing Your Combinations

You may change your User Combinations whenever necessary. You should follow the instructions below carefully to avoid unwanted changes to the RSVP Model 5100 programming.

In addition to the 4-digit combination you assign, you must indicate the arming and bypassing privileges for each user.

FOLLOW THESE STEPS - All entries are made on the same keypad you use to arm and disarm your system.

1. Enter "*"
2. Enter your Master Combination
 - The Trouble, Report, and Service lights will start flashing - indicating that you now have access to the system memory.
 - If you make a mistake, just wait 3 seconds and start over again with step 1.
3. Enter "1"
4. Enter the User Number (2 through 7)
5. Enter the New Combination
 - Use any four digits - repeating digits are OK.
 - DO NOT make a user combination the same as the first four digits of the master combination.
 - If you make a mistake, press "#". The keypad will begin to beep continuously. Start over at step 3.

continued on reverse

6. Enter an Arming Privilege number _____

- Enter "5" for Arm Only
- Enter "6" for Disarm Only
- Enter "7" for Arm & Disarm

7. Enter a Bypass Privilege number _____

- Enter "1" for Bypass ability
- Enter "2" for No Bypass ability
- If you make a mistake, press "#" and start over with step 3.

8. Enter "#" to complete the entry.

9. Repeat steps 3 through 8 if you want to change other combinations.

10. When changes are complete, enter "0 0 #" to return the system to normal operating mode. (If keypad beeps continuously, enter 00# again.)

11. Try your new combinations to verify that they work as you intend them to.

USE THESE CODES
ONLY IF CHECKED HERE

Enter "1" for Arm Only with Report
Enter "2" for Disarm Only with Report
Enter "3" for Arm & Disarm with Report

EXAMPLE: Your Master Combination is 1 1 1 1 1 1. You want to add or change User Combination #3. You want this combination to be 1234. This combination is for the night janitor who arrives while you are still there. You do not want him to have access to the building after he has finished his work. You want him to be able to bypass any portion of the system. Make the following entries:

* 111111 13 1234 5 1 # 00#