

Description

The 692F LED Fire Command Keypad offers highly visible LED annunciation of alarm and trouble conditions on DMP XR5FC and XR5SL Commercial Fire/Communicator Panels. The 692F provides individual zone alarm and trouble LEDs, system LEDs, an internal sounder, 2-button Fire alarm initiation, and Silence, Reset, and Fire Drill functions.

The 692F operates on 8.0 to 16 VDC at 30mA in normal mode and can draw up to 40mA in alarm. You can install individual keypads on wire runs of up to 750' using 22 gauge wire or up to 1,500' using 18 gauge wire.

Installing the 692F keypad

The 692F connects to the XR5FC and XR5SL panels' 4-wire keypad data bus.

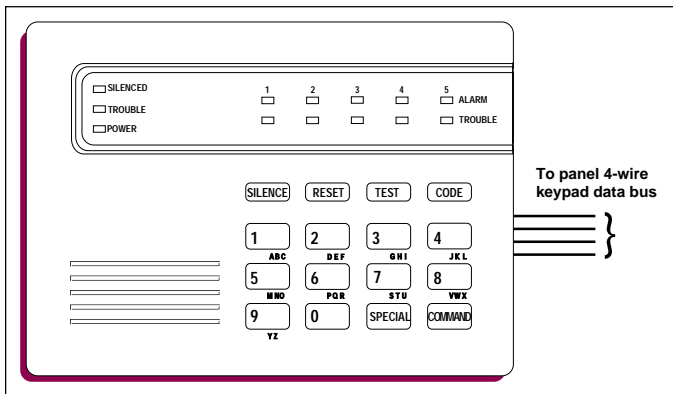


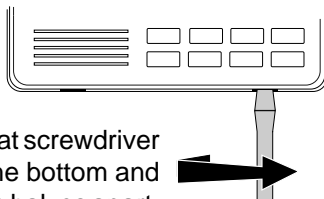
Figure 1: 692F keypad features and wiring

Harness color code

Red - Auxiliary Power **Yellow** - Transmit Data
Green - Receive Data **Black** - Ground

Opening the keypad

The 692F is made up two parts: the front, containing the circuit board and other components, and the base. To remove the base, insert a flat screwdriver into one of the openings on the bottom and **gently twist** it while pulling the halves apart. Repeat with the other opening.



Base information

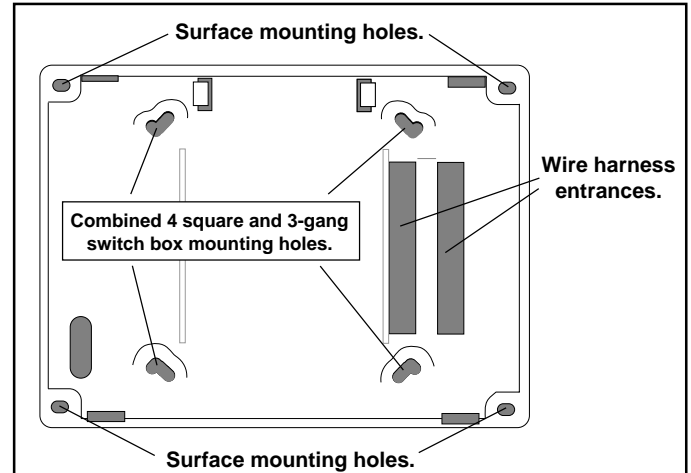


Figure 2: Base mounting hole locations

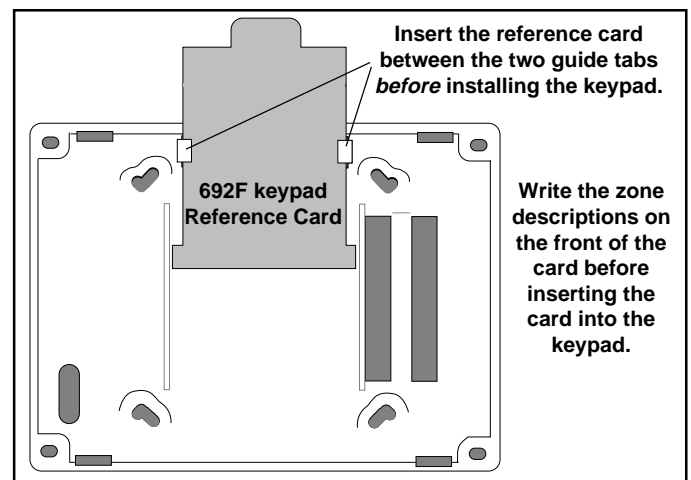


Figure 3: Reference Card installation

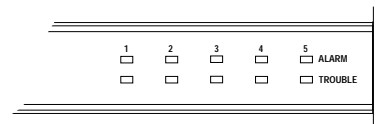
Five zone LEDs

The 692F contains five red zone alarm LEDs and five yellow zone trouble LEDs.

The red alarm LEDs turn on steady during an alarm condition and turn off when the zone has restored to normal and a Sensor Reset has been performed.

The yellow trouble LEDs turn on during a trouble condition, turn off when the zone restores to normal, and wink when the zone has been bypassed.

If the zone alarm or trouble is a Supervisory type zone, the LED pulses.



Three system LEDs

The 692F also contains a yellow Silenced LED that turns on when the bells are silenced manually from the keypad or after the Bell Cutoff time. The Silenced LED turns off if the alarm sounds again or when a Sensor Reset is performed.

The yellow Trouble LED turns on when either the panel has failed to communicate with the central station receiver after 10 attempts or when phone line 1 or 2 is in a bad condition. The Trouble LED turns off after a successful communication to the central station or when the phone line(s) have been restored to normal.

The yellow Trouble LED also flashes if the keypad loses communication with the panel.

The green Power LED is on steady when there is AC or DC power to the panel and off when power is lost. The Power LED also flashes when the panel's battery is low or missing.

Keypad function keys

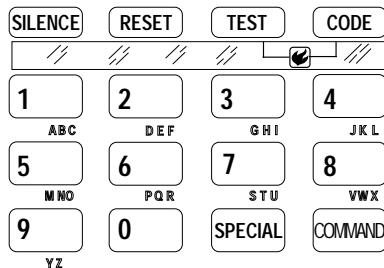
SILENCE - to silence a system alarm and the keypad sounder, press the **SILENCE** key and enter the user code.

RESET - to reset a zone after an alarm, press the **RESET** key and enter the user code (or press

COMMAND 47). This resets all zone alarm LEDs and momentarily drops power to the panel's zones 2 to 5 and smoke power output.

TEST - Press the **TEST** function key and enter the user code (or press **COMMAND** 41) to initiate the panel's System Test function. This test rings the panel bells for 2 seconds, checks the battery charge level, and sends a system test report to the central station on monitored systems.

CODE - To change the system user code, press **CODE**, enter the current user code followed by 0 + 1, and then enter the new 4-digit user code. (The user code must always be 4-digits.)



SPECIAL- Pressing the **SPECIAL** key and entering the user code initiates the Fire Drill function. The Fire Drill sounds the alarm bells and keypad sounder for the duration of the Bell Cutoff time. No keypad LEDs are turned on and no reports are sent to the central station during the Fire Drill. The **SILENCE** key can also be used to silence the bells during the Fire Drill function.

Manual Fire Alarm - To manually initiate a fire alarm, press and hold the **TEST** and **CODE** keys simultaneously until the alarm sounds.

Buzzer Operation

Each time a user presses a key on the 692F, the buzzer emits a short tone. After the user performs a successful keypad operation, the buzzer emits a 1/2 second tone. If the operation is not successful, the buzzer emits four short tones. This alerts the user to perform the function again.

During trouble conditions, the keypad emits a steady tone to alert the user. Entering the user code silences the buzzer.

Keyboard Backlighting

The keyboard on the 692F lights anytime a key is pressed or the alert buzzer sounds making it easy for a user in a darkened room to enter their code or perform a command function.

984 COMMAND

Enter 984 + **COMMAND** to allow the panel to pick up the phone line as a remote connect from the Remote Access™ downloader is being attempted.

Enter 984 + **COMMAND** plus up to 15 digits for the phone number if you are attempting to contact the Remote Access™ downloader from the panel.