

***Yours
is a
Wise
Decision***

Operating Instructions
DICTOGRAPH
SERIES 6000
SECURITY SYSTEM

A Message From Dictograph Security Systems

...The People Who Protect People

Deciding on a Dictograph Security System to protect your family or business is indeed a WISE decision.

By selecting a Dictograph system, you have gained more than just a sophisticated piece of hardware. You have gained true peace of mind. A full measure of security from this day on.

You have been shown how your system operates, and instructed in how to use it. You can certainly rest more comfortably knowing that your security system was installed by professional alarm technicians in addition to knowing you can contact your local Dictograph dealer for prompt assistance if it's ever required. Remember, your Dictograph dealer takes as much pride in maintaining the highest level of service as we take in producing what we believe to be the finest alarm systems and components in the world.

Congratulations on a WISE decision.

Table of Contents

A Message from Dictograph	2
Glossary of Terms	4-5
Understanding Your Security System	6-7
Types of System Operation	8
Selection/Changing Passwords	9-10
Protecting Your Premises While You're Away	11-12
Protecting Your Premises While You're There	13-15
Activating Manual Alarms	15
Chime (Door Announcer) Feature	16
Special Features	17
Fire Protection	18
How to Silence Alarms	19
How to Treat Trouble Signals	19
Annual Inspection and Regular Testing	20-23
Family Fire Escape Plan	24
California State Fire Marshal Recommendations	24
NFPA Standard #74 Requirements	25
Warranty	26

Glossary of Terms

For your convenience and to assist in the explanation of various terms that are discussed in this booklet (and necessary for the understanding and operation of your Dictograph security system), we have provided the following list of terms and their definitions.

Central Station:

An off-premises facility where professionally trained personnel monitor alarm signals around the clock. Signals are received and the proper authorities or designated individuals promptly are notified.

Chime Feature:

Even when your system is not ON a soft chime ("door announcer") signal will sound from the keypads whenever a detection device assigned the chime option is triggered (i.e. a protected exterior door opened).

Control Center:

The heart of your Dictograph security system. It houses sophisticated microprocessor circuitry which controls every function of your system.

Disturbed:

Means a detection device, such as door or window sensor, an interior detector, smoke alarm, etc. has been triggered.

Electronic Digital Communicator:

Built-in on your control center, this device uses your conventional phone line to transmit alarm signals to the central station, if you subscribe to that service provided by your Dictograph dealer.

Entry/Exit Delay System:

Allows you a predetermined period of time to enter and exit your premises without sounding an alarm while the system is on.

Escape Plan:

See Dictograph publication GL-497, provided separately with your equipment. Features methods of setting up and practicing routes of escape for use during a fire emergency.

Excluded:

Leaving one or more zones within your system unprotected. For instance, you may arm the perimeter zone of your system while you are home and leave the interior zone unprotected (Excluded) so that you may move about freely inside your home. When not in the EXCLUDED condition, the system is said to be in a NORMAL condition.

Full Control Station:

Any Keyswitch or Touchpad station from which you can completely control your system. The control center is always a full control station.

Instant Mode:

On an Entry/Exit delay system; allows you to manually change to a system that will sound an alarm instantly upon disturbance of the entry/exit zone.

Instant System:

Means that, when on, your system will sound an alarm the instant any protected access on the entry/exit zone is disturbed.

Interior Zone:

A separate circuit(s) which serves as a back-up to that which protects the perimeter of your premises (see Perimeter Zone(s)). Interior protection might include: pressure mats, passive infrared detectors and contacts on such interior doors as those leading to your basement or bedroom.

Limited Control Station:

Any Keyswitch or Touchpad from which you cannot silence an alarm or turn your system OFF while an alarm is sounding. Designated at time of installation.

On/Off:

ON - OUTSIDE ONLY: the burglar alarm portion of your security system is turned on and your interior zone(s) have been automatically excluded. This command is abbreviated as ON OUTSD ONLY on all touchpads.

ON - OUTSIDE/INSIDE: the burglar alarm portion of your security system is turned on with all protection included. This command is abbreviated as ON OUTSD/INSID on all touchpads.

OFF: the burglar alarm portion of your security system is not turned on.

If yours is a combination burglar/fire system, your FIRE alarm protection is ALWAYS ON.

Password:

The means by which you operate your system if you have Touchpad controls. Any series of numbers four (4) digits long.

Perimeter Zone:

All devices meant to activate an alarm if an intruder attempts to gain entry through protected doors or windows that lead directly into your premises from outside.

Restore:

Resetting your system to a normal condition after an alarm or test has taken place.

Supervision:

Monitors whether the detection circuit wiring is intact and whether the system is operating on the normal AC power source.

Understanding Your Security System

Your Dictograph security system has been designed and manufactured to meet the highest standards that provide the utmost in security without sacrificing user convenience.

You will probably come across features mentioned in this instruction booklet which do not apply to your system. Do not be concerned. The Series 6000 has so many fine features that few security systems will ever need to employ them all. Your Dictograph security consultant has designed your system to suit your precise needs; the features programmed into your system address those needs. If you have any questions regarding any feature of the system, or its operation, do not hesitate to call your Dictograph security consultant.

The Heart of Your System:

The control center is the heart of your protection system, featuring a housing that protects the system's vital circuitry and provides extra resistance against attack.

System Status at a Glance:

A series of Eight (8) LEDs indicate the status of your security system at all times.

These lamps are present on the control center, and may also be present on optional remote Touchpad stations.

When your system is OFF, the STATUS lamp will be lit if all burglary zones are not disturbed. The STATUS lamp will flash and the number(s) of the zone(s) or detection device(s) will be displayed, if a zone or device is disturbed. To identify the precise location, slide open the door on the control panel and look up the number on the listing provided.

When the system is ON and if any protected doors and windows are opened, or if interior back-up protection devices are disturbed, the BURGLARY lamp will be lit steadily and the alarm will sound. Either the ON (OUTSIDE) ONLY or ON (OUTSIDE/INSIDE) lamps will begin to flash and the location number(s) that caused the alarm will be displayed. To identify the precise location, slide open the door on the control panel and look up the number on the listing provided.

The ON (OUTSIDE ONLY) or ON (OUTSIDE/INSIDE) lamp, when lit steadily, indicate that the system is "ON". When both ON lamps are not lit, means the system is OFF.

The Sound of Security:

A built-in multi-tone speaker produces distinctive sounds for each type of alarm your system generates, to provide a clear indication of the emergency situation being signalled. Additional interior and exterior sounding devices are also available.

Both the BURGLAR and PROWLER alarm signals produce a rapid, oscillating tone which sounds continuously.

The FIRE alarm signal has been chosen to meet National Fire Protection Association recommendations for a "standard" evacuation signal. It repeats three (3) rapid tones, interrupted by a short pause.

Transmission of Alarm Signals:

Provided you have contracted for this service, the moment an alarm is activated, a silent signal is automatically transmitted from the control center's built-in electronic digital communicator. Those signals are transmitted over your existing conventional telephone lines to Dictograph's central monitoring station. There, professionally trained personnel receive signals, then promptly notify the proper authorities and designated individuals.

Continuity of Protection:

Your Dictograph security system operates on normal AC electrical supply and is "supervised" so that you will be notified by a TROUBLE signal (a soft sound from all control stations) in the event of a power failure, or if power to the control center itself is cut. In such cases, the system will automatically switch over to a rechargeable standby battery so that your protection remains intact. When power is restored, the system automatically switches back to normal electrical supply.

For convenience, a slight delay is built into this supervisory feature to prevent a TROUBLE signal from sounding upon only a momentary power failure.

TYPES OF SYSTEM CONTROLS

Your burglar alarm system can be controlled with Dictograph's high-security Keyswitch or Touchpad, or both.

Keyswitch Operation:

If you have chosen a Keyswitch control, you need simply insert and turn your Dictograph key at any full or limited control key station to turn your security system ON or OFF.

Dictograph's key control program assures you the highest degree of quality and security. The Keyswitch itself is a one-of-a-kind design that is pick-resistant. Each exterior key station is "tampered" so that an alarm will sound if anyone attempts to pull or pry the lock cylinder, or even poke out the LEDs in an effort to defeat the system (provided the installation features Dictograph's G29 locks). Interior key stations may also be "tampered".

Touchpad Operation:

If your system employs one or more Touchpad controls, you will have the use of your own MASTER PASSWORD, in addition to up to thirty (30) SECONDARY PASSWORDS, including two (2) special passwords, and a duress password.

A password can be any number four (4) digits long.

Types of System Operation

Optional: "INSTANT ALARM"

System:

This enables you to turn your system ON and turn OFF inside your premises or outside your premises at designated entry/exit points using Dictograph's optional, weatherproof Keyswitch or Touchpad controls.

delay time period discussed above, meaning that once the system is turned ON, an alarm will sound instantly if the entry/exit zone is disturbed. Note that the STATUS lamp on the main control center and remote Touchpads will light with the appropriate ON lamp as a warning that the system is in the INSTANT mode.

Optional "ENTRY/EXIT DELAY"

System:

You turn your system ON or OFF only while inside the premises. You do so using the high-security Keyswitch or Touchpad located on the control center ... or at any optional interior remote control station. For convenience, there is a selectable delay time period for the designated primary entry/exit door that: 1) gives you time to exit the premises after turning the system ON and 2) gives you the time to reenter the premises and turn the system OFF, without causing an alarm.

You may change from the DELAY mode to an INSTANT mode by depressing, a second time, the ON-OUTSD ONLY (digit 2) or ON - OUTSD/INSD (digit 3) pad on any Touchpad so marked, when turning the system ON. Doing so eliminates the



Selecting or Changing Passwords

Selecting or Changing Passwords

Note first that you must use the present MASTER PASSWORD to make any changes or add SECONDARY PASSWORDS. A service call may be required to reprogram a MASTER PASSWORD if it is forgotten. The initial factory-programmed MASTER PASSWORD is 1,2,3,4.

NOTE: The MASTER PASSWORD allows the user to turn the system ON and OFF in any mode, program and change secondary passwords, exclude specific locations and completely operate all functions with regard to the MEMORY, TEST, TROUBLE, CHIME and RESET features of the system.

To Change MASTER PASSWORD

- 1) Be sure system is DISARMED.
- 2) Enter the present MASTER PASSWORD.
- 3) Press PROGRAM (0).
- 4) Enter the USER number.
00 is the proper USER number regarding the master password.
- 5) Enter new MASTER PASSWORD.
- 6) Press ENTER(*).

Example: Change present MASTER PASSWORD of "1,2,3,4," to "5,6,7,8".
Enter the following: 1+2+3+4 + 0
(Program) + 0 + 5 + 6 + 7 + 8 + *
(Enter)

The new MASTER PASSWORD is now "5,6,7,8".



SECONDARY PASSWORDS:

SECONDARY PASSWORDS are divided into three groups.

NOTE: No Secondary Password can be used to program other passwords.

Group One: User numbers 01-06 and 08-28. This group has all other uses of the master password.

Group Two: User numbers 07 and 29. This group has all other uses of the master password but can only turn the system ON in the ON - OUTSIDE/INSIDE mode.

Group Three: User number 30. This code is a duress code that will turn off your system but send a silent code to the central station. NOTE: This is a special service that must be contracted for and separately programmed into your system.

To Assign

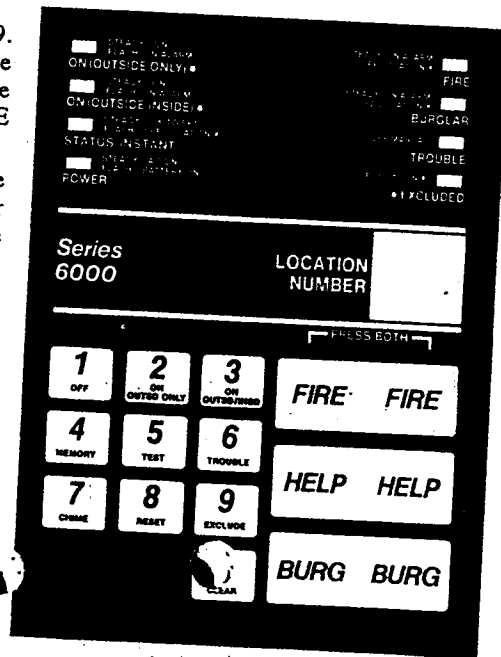
SECONDARY PASSWORDS...

- 1) Be sure system is DISARMED.
- 2) Enter the MASTER PASSWORD.
- 3) Press PROGRAM (0).
- 4) Enter the User number any number from 01-30.
- 5) Enter SECONDARY PASSWORD.
- 6) Press ENTER(*)

NOTE: If you want to eliminate a SECONDARY PASSWORD:

- 1) Enter the MASTER PASSWORD.
- 2) Press PROGRAM (0).
- 3) Enter the user number.
- 4) Press ENTER (*).

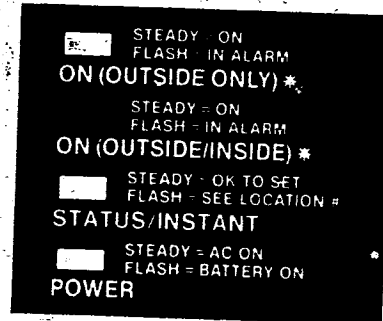
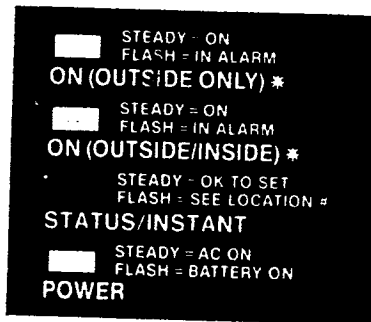
NOTE: A new password may be entered over an existing password.



Protecting Your Premises While You're Away

Turning ON/OFF for "INSTANT" system

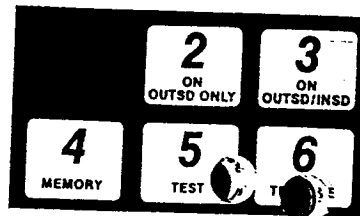
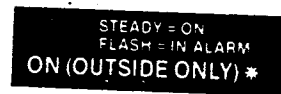
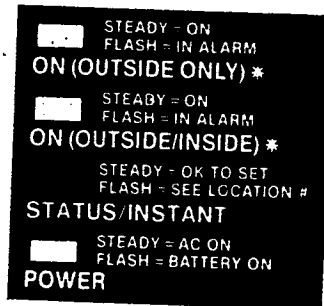
- 1) Check to see that STATUS lamp on control center is lit, signifying that your system is ready to be turned ON.
- 2) Leave your premises through a door which features an exterior remote control Keyswitch or Touchpad.
- 3a) For keyswitch: operate your key. ON lamp will light.
- 3b) For touchpad: enter your password and press pad marked either ON-OUTSD ONLY or ON-OUTSD/INSD depending upon your preference. The appropriate ON lamp will light.
- 4) Upon returning, go to any entrance door which features an exterior remote control Keyswitch or Touchpad.
- 5) Operate your key or enter your password and press pad marked OFF at that station.
- 6) ON light will go out.
- 7) Reenter your premises.



Turning ON/OFF for "DELAY" system

- 1) Check to see that STATUS lamp is lit on control center or any remote control Touchpad or Keyswitch station.
- 2) Enter your proper password and press pad marked either ON-OUTSD ONLY or ON-OUTSD/INSD or operate your keyswitch.
- 3) The appropriate ON lamp will light.
- 4) Leave the premises immediately through the entry/exit delay door before the delay time runs out. The delay time can be preset for EXIT from 10 to 150 seconds, in 10-second intervals. Underwriters Laboratories, Inc. standards require the delay to be set to no more than 60 seconds. A warning signal will alert you that you have surpassed the allotted exit delay time. If that happens, you must then turn the system OFF and begin the process again. If you do not, and attempt to exit, an alarm will sound.

- 5) Upon returning, enter through a designated entry/exit delay door. A soft pulsating tone will sound from the control center and remote touchpads when you enter. That is to remind you that the selectable delay period has begun. That period may be from 10 to 150 seconds, in 10-second intervals. U.L. requires no more than 45 seconds.
- 6) Immediately, go to the nearest Touchpad or Keyswitch control. Enter your proper password and press pad marked OFF or operate your key to turn the system OFF.
- 7) The ON lamp will go out.



Protecting Your Premises While You're There

NOTE: The system cannot be turned ON with any Burglary zone disturbed (the STATUS lamp will be flashing). The 2 Digit Location Number Display will flash the number(s) of the disturbed location(s). Such an indication usually means that you've left a door or window open. Close the open door or window, etc. in the disturbed zone. Refer to the location number chart inside the door of the control panel.

Keyswitch Stations:

Turning ON/OFF...

- 1) Check to see that system STATUS lamp is lit.
- 2) Momentarily operate the Keyswitch on any full or limited control station (designated at installation).

NOTE: When system alarms are not sounding, the system can be turned OFF from either a full or limited control station. When alarms are sounding, they can be silenced only at a full control station.

Excluding the Interior Locations...

- 1) Check to see that STATUS lamp is lit and that either ON lamp is not lit.
- 2) At remote control stations, turn key and hold in "ON" position for two (2) seconds.
- 3) ON lamp will flicker continuously to indicate the interior locations have been excluded. At control center, ON/OUTSD ONLY lamp will be lighted.
- 4) The system is now ON. Perimeter Zones will be protected; interior zones will not.

Silencing Alarms...

Momentarily operate the Keyswitch on any full control station.

NOTE: Limited control stations cannot be used to silence alarms.

Silencing Trouble Signals...

Enter your password and then press the pad marked RESET.



Excluding Specific Locations

You have the ability to exclude any location that is programmed at time of installation.

To do so, enter your password and then depress the EXCLUDE key. Enter the 2 digit number of the location to be excluded. Depress the ENTER key.

NOTE: Only one 2-digit location number may be entered at a time. If more than one location is desired, the above sequence is used for each location.

EXAMPLE: Your Password is 1234 and you wish to exclude location 03.

Enter: 1 + 2 + 3 + 4 + Exclude (9) + 0 + 3 + Enter (*).

If the EXCLUDE lamp is lit and you wish to determine what location(s) is (are) excluded, use the following sequence: Enter your password. Then press the EXCLUDE key followed by the ENTER key. The display will now indicate the numbers of all locations that are excluded.

All locations that were excluded will be placed back in service upon turning the system OFF.



Activating Manual Alarms:

Whether your system is ON or OFF, depressing the double pads marked FIRE - FIRE, HELP - HELP, or BURG - BURG on your control center or any similarly marked remote control stations will 1) cause your system's audible alarms to sound and; 2) send the appropriate silent signal to Dictograph central station (if you have contracted for that service). **IMPORTANT:** Both pads must be pressed at the same time to sound such alarms.



Chime Feature:

This feature makes you aware of an entry even though your system is not ON. The CHIME feature must be programmed at the time of installation. To use:

- 1) Enter your Password then press the pad marked CHIME on your control center or remote control station.
- 2) A soft tone will be heard in the immediate vicinity of the control center and each additional inside Touchpad whenever a disturbance occurs while the system is OFF.
- 3) The CHIME feature is automatically turned OFF when you turn your system ON.
- 4) The CHIME feature can also be turned OFF by entering your password and then pressing the CHIME pad again.



Burglary Zone Supervision:

The Burglary circuit wiring in your system is supervised so that a trouble signal will sound and you will receive visual notification if there is ever a break or short in that wiring.

Whether your system is ON or OFF and a break or short occurs:

- 1) A TROUBLE signal will sound.
- 2) The TROUBLE lamp will light.
- 3) A signal will be transmitted to Dictograph's central station (if you have contracted for that service).



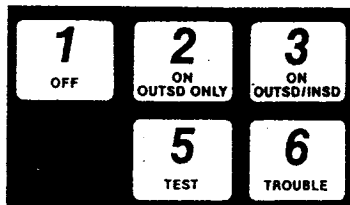
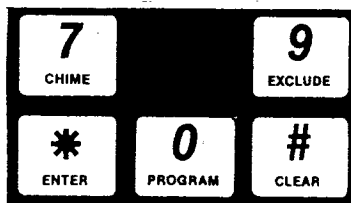
Special Features

Alarm Memory:

In the event of an alarm activation, sounding devices can be silenced...either manually or by the automatic alarm timer (see below). The ON lamp on all key control stations will continue to flash to let you know an alarm has taken place. One or both of the ON lamps will be flashing and the appropriate alarm lamp will be lit on the control center or any remote Touchpad. The display will automatically run through the sequence of all the Location Numbers that caused the alarms. To identify these numbers refer to the location number chart inside the door of the control center.

To reset Alarm Memory, in addition to the Alarm lamps display and smoke detectors, enter your password then press the pad marked RESET on the control center.

You are able to determine the locations of previous alarms that have taken place by entering your password and then pressing the MEMORY pad. The display will indicate the location numbers. To identify these numbers refer to the location number chart inside the door of the control center.



Automatic Audible Alarm Timer:

The audible alarms generated by your system may be programmed by the installer to sound, upon alarm, for 1 to 15 minutes and then automatically reset...or to ring constantly until manually reset.

Additional Features:

Your system can be designed to include a variety of other optional features. Ask your Dictograph security consultant for an explanation of their applications and operation.

Fire Protection

Fire Zone:

Your Dictograph security system can feature the advantages of a built-in supervised fire zone. A TROUBLE signal will sound if the wires which connect the detectors to the control center should break or short.

Activation of any fire/smoke/heat detector(s) causes a distinctive, 3-tone evacuation signal to sound as per National Fire Protection Association standards. Your digital communicator also alerts our central station so we can notify the fire department without delay while you concentrate solely on escape.

Smoke Alarm Verification:

We have learned that pending national standards will soon require that all smoke alarm systems have a self-verification ability to minimize accidental alarms. Dictograph has taken the industry lead by building this feature into your system prior to adoption of the standard. Therefore, your system will not sound an alarm or send a signal to the central station if the signal transmitted to the control center from the smoke detector is less than 25 seconds long. This is to help minimize accidental alarms. Signals from heat detectors are delayed only 3 seconds. Manual fire alarm operation is not affected.

NOTE: We will be able to remove this verification upon installation if you specifically request that it not be made operational.

Silencing Fire Alarms:

Operate any full keyswitch control station or enter your password and press pad marked OFF at any Touchpad control station.



How To Silence Your Alarms

Keyswitch Operation:

To silence a FIRE, BURGLAR or PROWLER alarm, turn key to ON position momentarily.

NOTE: Remote control stations that have been designated at time of installation as limited controls will not silence a BURGLAR alarm.

Touchpad Operation:

To silence a FIRE, BURGLAR or PROWLER alarm, enter your password at the control center or any remote control Touchpad and then press the pad marked OFF.

Restoring Smoke Detectors:

When alarms have been silenced and you wish to restore smoke detectors in the fire alarm system to operation and extinguish the FIRE lamp enter your password plus RESET on the control center. If smoke detectors have been installed in your system, they will be automatically reset. The smoke detector lamp will remain lit on the activated detector and will only go out after entering your password, then reset. The lamp will not go out if smoke is still present in the detectors.



How To Treat Trouble Signals:

The TROUBLE signal is a soft, continuous, high-pitched tone which is generated by the control center and Touchpad remote controls only. To silence such a signal, enter your password and then press either pad marked RESET.

To determine the location(s) which may be "in TROUBLE", go to the control center. Enter your password, then press the pad marked TROUBLE. The two-digit display will run through all the numbers of the locations involved. Refer to the chart inside the control center door.



Annual Inspection and Regular Testing

Although your Dictograph security system is engineered to the strictest quality standards and was installed by professional technicians, it should be tested and inspected on a regular basis.

We suggest that you arrange for your Dictograph dealer to inspect your system at least once per year. Underwriters Laboratories, Inc. standards require that we instruct you to test your system once per week.

There are two ways to test your system.

I. Using The "System Test" Feature:

1. Make sure the system is OFF.
2. If you have contracted for Dictograph central station service, be sure to let them know you'll be conducting a test.
3. Enter your password.
4. Press pad marked TEST.

5. One by one, open every protected access (i.e. doors and windows) and otherwise trigger any additional device(s) such as motion detectors. When you do so, you should hear a signal from the control center informing you that all is okay. If you do not receive that signal, call for service. When you close these same accesses, you should again hear the test signal. If you do not, call for service.

6. To test fire and smoke detection devices, as well as manual alarm capabilities, follow the procedures outlined in part II of this section. It will only be necessary to activate those alarms. It will not be necessary to silence or reset them. When activated, you should again hear the signal from the control center. If you do not, call for service.

7. When you have tested all functions, return to the control center.
8. Press pad marked CLEAR.
9. If you have contracted for Dictograph central station service, inform them that your test is complete.

II. Alternate System Test:

Enlist the assistance of a family member or friend to help you with this system test. One of you will have to be at the control center to reset the alarm each time it is activated. Also, we suggest you alert your neighbors prior to testing to avoid undue concern. And, if your system is connected to a Dictograph central station, inform them also. After testing, let them know you are finished.

Central Station Signal Test:

First, call the central station to let them know you'll be conducting a system test. Then test each alarm function as described in the following sections. Be sure to allow the sounding devices for each function to ring for at least sixty (60) seconds. Call the central station to be sure each alarm signal has been properly received.

Heat Detector Test:

If you have contracted for Dictograph central station service, first let them know you'll be conducting a test.

Have someone activate a heat detector. There are two ways this can be done. First, by using a lighted match or candle. Second, by using a photoflood lamp with a 500 watt bulb. In either case, hold the flame or lamp so that it is at least one-half (1/2) inch below the center of the thermal disc. In a few seconds, the detector will activate and the alarm will sound.

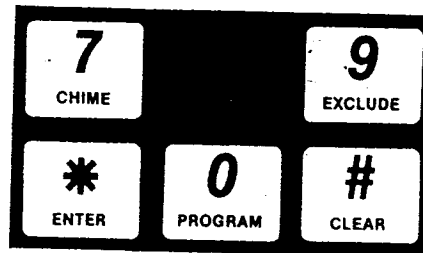
Activate the Keyswitch or enter your password at the control center Touchpad to silence the alarm. Depress the RESET pad to restore the system. If the alarm lamp remains lit after you press the RESET pad, it means the detector is still hot. It may take several minutes to restore the system. To speed this process, wrap an ice cube in a paper towel and place it against the thermal disc after it has been activated.

Continue this procedure until all heat detectors have been tested. **CAUTION:** To avoid possible damage, do not allow the flame or the hot lamp bulb to come in direct contact with the thermal disc.

Smoke Detector Test:

If you have contracted for Dictograph central station service, first let them know you'll be conducting a test.

Dictograph's smoke detector has a built-in test feature so that each unit can be tested without simulating a smoke situation. Applying a magnet to the area will duplicate the condition which occurs when smoke enters the chamber. The alarm indicator lamp will light and the alarm will sound. To silence the alarm, activate the Keyswitch or enter your password and then press pad marked OFF at the Touchpad on the main control center. Enter your password, then press RESET to restore the system.



Manual Fire Alarm Test:

If you have contracted for Dictograph central station service be sure to let them know you'll be conducting a test.

Depress the FIRE - FIRE pad located on the control center. The FIRE alarm will sound. To silence the alarm, activate the Keyswitch or enter your password and press the pad marked OFF at the control center. Enter your password then press RESET to restore the system.

Burglar Alarm Test:

If you have contracted for Dictograph central station service be sure to let them know you'll be conducting a test.

Enter your password then press pad marked ON-OUTSD/INSD to turn your system ON. Open a protected door or window. The alarm will sound and the zone lamp will light. To silence the alarm, activate the Keyswitch or enter your password and then press the OFF pad on the Touchpad at the control center. Enter your password then RESET to erase the Alarm Memory and restore the system. Repeat the procedure until all protected accesses and interior protection devices have been tested.

Manual Burglar Alarm Test:

If you have contracted for Dictograph central station service be sure to let them know you'll be conducting a test.

Depress the BURG - BURG pad on the control center. The alarm will sound. To silence the alarm, activate the Keyswitch or enter your password then press the pad marked OFF on the Touchpad at the control center. To restore the system, enter your password then press RESET on the control center. Continue the procedure to include the Prowler (BURG - BURG) function on all remote control stations. Also, activate all portable or any other initiating devices that allow you to sound such an alarm.

Emergency Alarm Test:

If you have contracted for Dictograph central station service be sure to let them know you'll be conducting a test.

Depress the HELP - HELP pad on the control center. The Alarm will sound. To silence the alarm, activate the keyswitch or enter your password and then press the pad marked OFF. Enter your password then reset. Continue this procedure to include the HELP - HELP pad on all remote stations as well as any other devices connected to that circuit.



Emergency Power Protection Test:

If you have contracted for Dictograph central station service be sure to let them know you'll be conducting a test.

This tests the condition of your system's standby battery. First, unplug the transformer from the wall outlet. The AC power lamp will go out. Press the FIRE - FIRE pad on the control center. The alarm will sound. To silence the alarm, activate the Keyswitch or enter your password and then press the pad marked OFF on the Touchpad at the control center. Restore the system by entering your password then pressing the RESET pad.

If the alarm does not sound, or sounds only faintly, the battery is weak and should be replaced. Reconnect the transformer and make sure that the AC lamp on the control center is lit. Although the standby battery may continue to provide satisfactory performance for a time, replacement is strongly recommended at intervals of three (3) years or less. Contact your Dictograph dealer to arrange for replacement with a Dictograph G-600 Guardian Angel IV battery.



Family Fire Escape Plan

California State Fire Marshal Recommendations

In accordance with Underwriters Laboratories, Inc. and National Fire Protection Association standards, we are supplying separately Dictograph publication GL-497, PREPARE YOUR FAMILY'S ESCAPE PLAN BEFORE FIRE STRIKES YOUR HOME. This is a fire escape plan prepared by Dictograph with the cooperation of the International Association of Fire Chiefs. We urge you to read it in detail, then prepare and practice the escape plan as outlined.

With regard to the number and placement of smoke and heat detectors, the California State Fire Marshal requires that we print the following recommendations.

"Early warning fire detection is best achieved by the installation of fire detection equipment in all rooms and areas of the household as follows: A smoke detector installed in each separate sleeping area (the vicinity of, but outside of, the bedrooms), and heat or smoke detectors in living rooms, closets, utility and storage rooms, basements and attached garages."

NOTE: Approval of the system's burglar alarm functions does not fall within the California State Fire Marshal's area of jurisdiction.

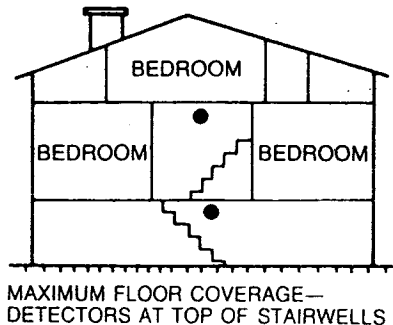
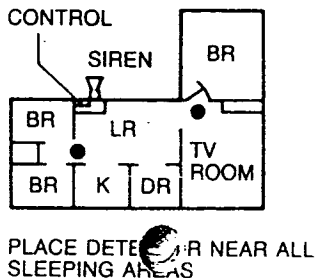
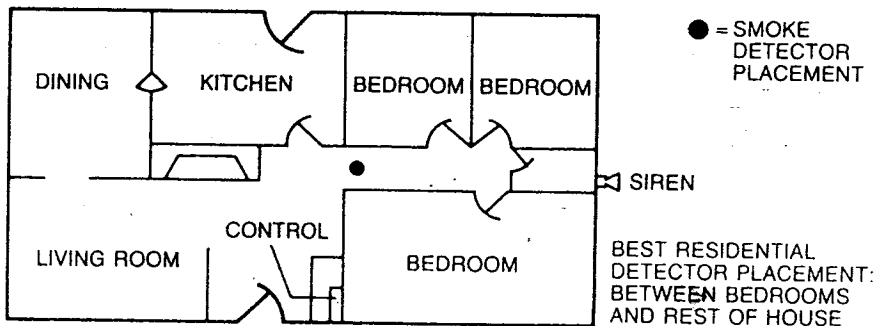
NFPA Standard 74 Requirements

With regard to the number and placement of smoke and heat detectors, the following was excerpted from Standard #74 and is included here as additional information. Standard #74 is published by the National Fire Protection Association, Batterymarch Plaza, Quincy, MA 02269. It is the standard for household fire warning equipment and covers the requirements for proper selection, installation, operation and maintenance of fire warning equipment for use within family living units.

Section 2-4 of that standard reads as follows:

"2-4.1.1 Smoke detectors shall be installed outside of each separate sleeping area in the immediate vicinity of the bedrooms and on each additional story of the family living unit, including basements and excluding crawl spaces and unfinished attics....The provisions of 2.4.1 represent the minimum number of detectors required by this standard. It is recommended that the householder consider the use of additional smoke or heat detectors for increased protection for those areas separated by a door from the areas protected by the required smoke detectors under 2-4.1.1 above. The

recommended additional areas are: living room, dining room, bedroom(s), kitchen, attic (finished or unfinished), furnace room, utility room, basement, integral or attached garage, and hallways not covered under 2-4.1.1 above. However, the use of additional detectors remains the option of the householder."



Warranty

Dictograph Security Systems Limited Warranty One Year Duration

Dictograph Security Systems warrants that all Dictograph Security Systems components shall be in good operating condition when delivered. Dictograph Security Systems' obligation is limited to the repair or replacement, at its option, of any defective Dictograph Security Systems component which has not been subject to abuse or mishandling within one year from completion of installation. This warranty is void if a Dictograph Security Systems component has not been installed in accordance with Dictograph Security Systems recommended installation procedure.

Any Dictograph Security Systems component covered by the warranty requiring repair or replacement shall be returned to Dictograph Security Systems (shipping charges prepaid) through a Dictograph Security Systems Franchised Distributor.

This warranty relates to the condition of the Dictograph Security Systems components when delivered; it does not warrant that such components have been properly installed. All warranties implied by law with respect to such components are hereby limited to a duration of one year from completion of installation. The obligations stated by Dictograph Security Systems under this warranty are in lieu of all other obligations or liabilities on the part of Dictograph Security Systems. **IN NO EVENT SHALL DICTOGRAPH SECURITY SYSTEMS BE LIABLE FOR ANY CONSEQUENTIAL OR SPECIAL DAMAGES.** Dictograph Security Systems neither assumes nor authorizes any other person to assume for it any product liability in connection with the sale of the Dictograph Security Systems or components not covered by this warranty.

Dictograph[®]
SECURITY SYSTEMS

International Headquarters:
26 Columbia Turnpike, Florham Park, New Jersey 07932
(201) 822-1400

GL-1007



© 1987, DICTOGRAPH SECURITY SYSTEMS

