

INSTALLER'S MANUAL

DIGI-KEY IIA

GENERAL DESCRIPTION DK-IIA

Read and become familiar with the information contained in the User's Manual before proceeding with the installation instructions. We also recommend that the Digi-Key IIA be mounted at eye level for ease in viewing zone indicators.

INSTALLATION INSTRUCTIONS:

The Digi-Key IIA is shipped from the factory with all jumpers installed (see Figure III). They are defined as follows:

JUMPERS

JUMPER A—(Multi-User/Conventional)
—Cut for Multi-User.

JUMPER B—(Default/Random Power Up code)—Cut for Default, See "B JUMPER" section.

JUMPER C—Do not cut.

ZONE JUMPERS (zone jumpers 1 through 8 apply in a Digi-Key IIA)—Cut appropriate zone jumper to enable bypass, see "ZONES 1-8 BYPASS JUMPERS" section.

ZONES 1-8 BYPASS JUMPERS

ZONE JUMPERS must be cut in order to allow user to bypass specific zones. Ex-

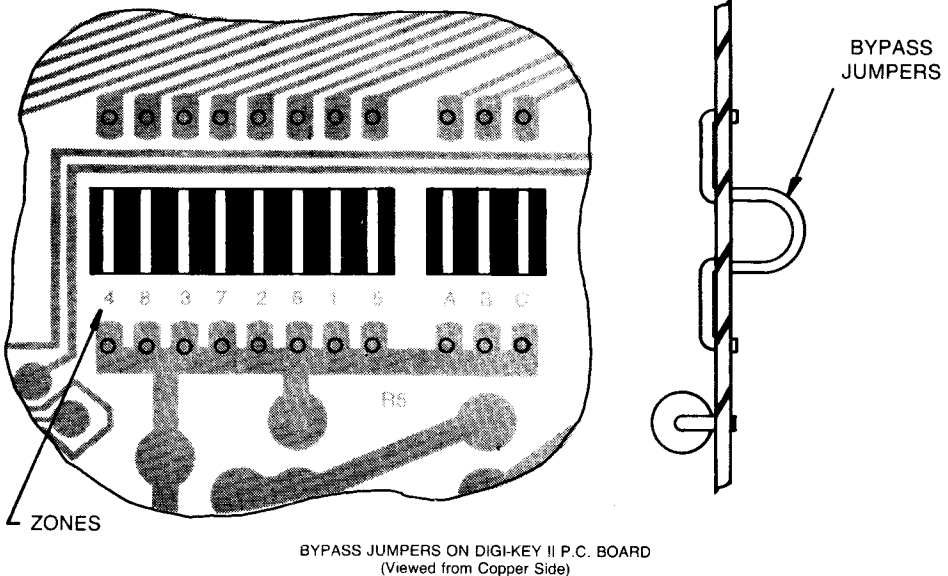
ample: To allow user to bypass zones 2, 3 and 4, the installer must cut bypass jumpers 2, 3 and 4 on back of the DK-IIA P.C. Board (see Figure III).

NOTE: 24 Hour Audible or Silent Zones **CANNOT** be by-passed.

Different bypass jumpers may be cut on different DK-II's when more than one DK-II is used. Example: On keypad A, cut zone jumpers 2, 3 and 4. On keypad B, cut jumpers 2, 4 and 5. In this case, keypad A can bypass zones 2, 3 and 4 but not zone 5. Keypad B can bypass zones 2, 4 and 5 but not zone 3. This feature is particularly useful in the Multi-User Mode.

A JUMPER

Jumper A is shipped from the factory in the Conventional Mode. This jumper must be cut for Multi-User Mode operation. In the Conventional Mode, zone bypassing



MEMORY CHIP
**FIGURE III CANNOT BE REPROGRAMMED
IF DURESS IS USED**

and mode changing can be accomplished (refer to the OPERATING INSTRUCTIONS). In the Multi-User Mode, alarm memory is lost. Zone bypassing can be accomplished but mode changing cannot. Modes are fixed. Instant, Forced Arming and Test are not allowed. Zone(s) PROM selected for Instant or Delay cannot be changed.

The DK-IIA, in the Multi-User Mode, attempts to keep the Avenger panel armed at all times. When the Access Code is entered, the DK-IIA will momentarily disarm the Avenger—then attempt to re-arm it, and in fact will do so except when an alarm occurs and a zone is violated. In this case, the Avenger will disarm and the Access Code must be entered again. This will normalize the system.

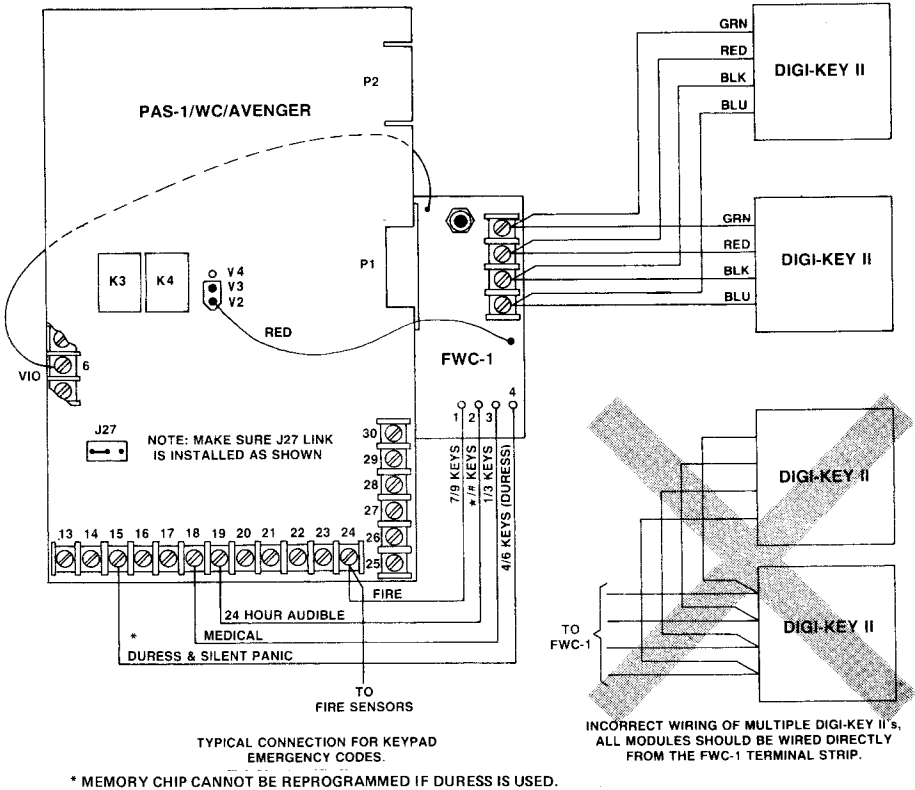
Example:

An example of a Multi-user installation might be that user A is assigned zones 1 thru 4 in their area, and user B is assigned zones 5 thru 8 in their area. Both users can arm their respective zones simply by inserting **their** code at **their** DK-IIA station, but both users **must** use the bypass method to remove any or all zones from their protected (armed) status.

ARMING ZONES

User (A) - DK-IIA Code 8,0,4,# (ENTER) - Zones 1 thru 4 will arm.

User (B) - DK-IIA Code 7,1,7,# (ENTER) - Zones 5 thru 8 will arm.



NOTE: THE FWC-1 HAS BEEN FITTED WITH A TWO POSITION MOLEX CONNECTOR IN ORDER TO PROVIDE HIGHER RELIABILITY IN CONNECTING +5 VOLTS TO THE FWC-1. CONNECT AS SHOWN IN ORDER TO INSURE PROPER OPERATION OF THE FWC-1 WITH THE PAS-1/WC AND AVENGER. IF THE V300-D IS USED WITH THE PAS-1/WC AND AVENGER, ATTACH THE V300-D AS OUTLINED IN THE V300-D INSTRUCTIONS. REMOVE THE MOLEX CONNECTOR FROM THE FWC-1, STRIP THE RED WIRE AND SPLICE INTO THE RED WIRE ON THE V300-D.

FIGURE IV

DISARMING ZONES

User (A) - DK-IIA Code 8,0,4,1,2,3,4,#
(ENTER) - Zone 1 thru 4 will disarm.

User (B) - DK-IIA Code 7,1,7,5,6,7,8,#
(ENTER) - Zone 5 thru 8 will disarm.

If either user wishes to disarm some of their zones of protection (but not all) they simply do the following:

PARTIAL DISARMING OF ZONES

User (A) - DK-IIA Code 8,0,4,1,4,#
(ENTER) — Zones 2 and 3 still armed.

User (B) - DK-IIA Code 7,1,7,7,8,#
(ENTER) — Zones 5 and 6 still armed.

It should be noted that the Entrance/Exit Delays are reestablished making areas protected by Entrance/Exit Delays vulnerable to access from other Multi-Users. However, this risk can be eliminated in high security situations by using Instant zones in these areas.

B JUMPER

The B JUMPER is shipped from the factory in the Random Mode. This jumper must be cut for Default Mode operation. In the Default Mode, any lit display LED's will flutter at a unique rate when a power outage has occurred. On power up, the Default Access Code (9630#) must be used to disarm the system. The user may then reprogram at the keypad after pressing the program button in the control panel (see PROGRAMMING section of the User's Manual).

If the B JUMPER is not cut (Random Mode), an 8 digit Random Code is stored

on power up and the display will not flutter indicating a power failure. The Random Mode is recommended in high security applications.

CONNECTING DK-IIA TO THE FWC-1 BOARD

Connect the FWC-1 board to the DK-IIA as shown in Figure IV. If the Duress Code is used, the 4 pin on the FWC-1 board may be connected to a silent channel. The Duress Code will cause a momentary voltage to appear on the 4 pin. Simultaneous pressing of keys 4 and 6 will also develop a momentary voltage on the 4 pin. Other emergency alarms may be initiated from the keypad by simultaneously pressing the 7 and 9 key combinations (voltage out on 1), the 1 and 3 key combinations (voltage out on pin 3), and the ★ and # key combinations (voltage out on pin 2). Peel off stick-on labels designating fire, police and medical are shipped with the DK-IIA and should be applied on the face of the DK-IIA next to the appropriate key. Also supplied are a list of peel off stick-on commonly used words to identify zones.

For customer programming convenience, a momentary key switch may be wired in parallel with the program push button (use rosen core solder). The key switch should be mounted on front of panel.

SPECIFICATIONS:

Voltage: 8-16 Vdc
Current consumption typically 80mA
Temperature operating range:
35°F to 135°F
Environment: For indoor use only
Dimensions: 5.5" x 4.75" x .937"
Shipping weight: 8 oz.

FOR TECHNICAL ASSISTANCE CALL:
800-631-2144
IN N.J. (201) 364-7200

 **acron**
corporation
490 OBERLIN AVE. SO., LAKEWOOD, N.J. 08701