

DIGITAL REMOTE CONTROL STATION

MPI-275

INSTALLATION MANUAL

moose

APPLICATION

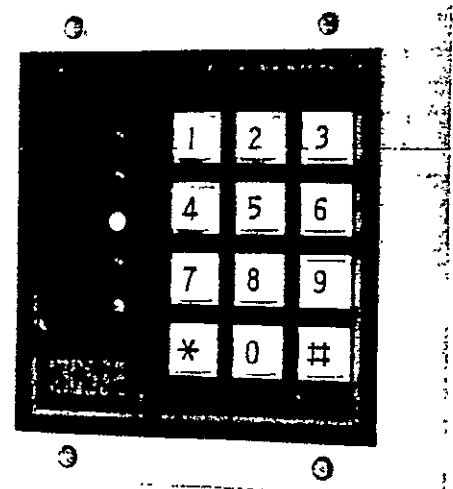
The MPI-275 Is A Digital Remote Arm/Disarm Station For The MPI-735, MPI-775, MPI-725 Or Any Other Control Using A Positive Binary Keyboard Input.

SPECIFICATIONS

- 6 To 15 Volt DC Operation.
- Twelve (12) Digit Keypad:
 - (1) Over One Million Operations.
 - (2) .1 Inch (2.2 mm) Key Stroke.
- Operating Current: 10 To 60 Milliamps (Varies With Number Of LED's Illuminated).
- All LED's Negative Trigger. (AC LED Has Positive And Negative Leads Available).
- Built in Two Button Panic's (Depends On Control).
- Indoor Or Covered Outdoor Environment.
- Temperature Operating Range:
 - 22 To 122 Degrees F (-30 To +50 C).
- Dimensions: 4.6 x 4.7 x .7 Inches.
- Positive Binary Coded Keypad Output.

FEATURES

- Twelve (12) Digit Keypad.
- Five (5) Light Emitting Diodes.
 - (1) Instant Mode Red LED
 - (2) Circuit Status Green LED
 - (3) Armed Yellow LED
 - (4) Alarm Memory Red LED
 - (5) AC On Green LED
- Built In Pre-Alarm Piezo Resonator (7500 hz).
- Printed Circuit Foil Jumper Options.
- Mounting: Surface Or Electrical Box (One Or Two Gang).
- Unpluggable 8' Wiring Harness (12 Wires).

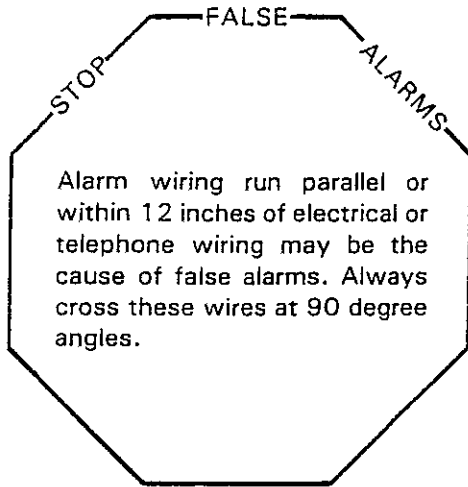


L919

Printed in U.S.A. 3/15/84

INSTALLATION INSTRUCTIONS:

Step 1. Attach the mounting plate to the wall or to an electrical box. Use flat head #6 machine screws. (Use the mounting plate as a template for mounting without using an electrical box).



Step 2. Run multi-conductor wire between the control and the MPI-275. Record the color of the interconnecting wires on the green record card enclosed with the MPI-275.

Step 3. Unplug the 12 Pin, J1 wiring connector from the MPI-275 remote station.

Step 4. J1-Pin 1 DC Voltage Input

Pin 1 is the positive voltage input. (+6 to +15 volts DC) J1-Pin 1 is the common positive voltage for the LED's, keyboard, and the pre-alarm.

Step 5. J1-Pin 2 Negative Pre-Alarm Input

Pin 2 is the negative input lead for the on-board pre-alarm (Piezo Resonator). When triggered, the Piezo Resonator will provide an audible tone at approximately 7500 hertz.

Truth TABLE 1

The output from the keyboard provides a positive binary format. A one (1) represents +12 VDC and a zero (0) represents no output.

Step 6. J1-Pin 3 Keyboard "D" Output

Pin 3 provides a positive binary output according to Table 1.

Step 7. J1-Pin 4 Keyboard "C" Output

Pin 4 provides a positive binary output according to Table 1.

Step 8. J1-Pin 5 Keyboard "B" Output

Pin 5 provides a positive binary output according to Table 1.

Step 9. J1-Pin 6 Keyboard "A" Output

Pin 6 provides a positive binary output according to Table 1.

Pin	4	5	6	7
	D	C	B	A
No Key	0	0	0	0
Digit 1	0	0	0	1
Digit 2	0	0	1	0
Digit 3	0	0	1	1
Digit 4	0	1	0	0
Digit 5	0	1	0	1
Digit 6	0	1	1	0
Digit 7	0	1	1	1
Digit 8	1	0	0	0
Digit 9	1	0	0	1
Digit 0	1	0	1	0
Instant	1	0	1	1
Panic	1	1	1	1

Step 10. J1-Pin 7 and 8 AC LED

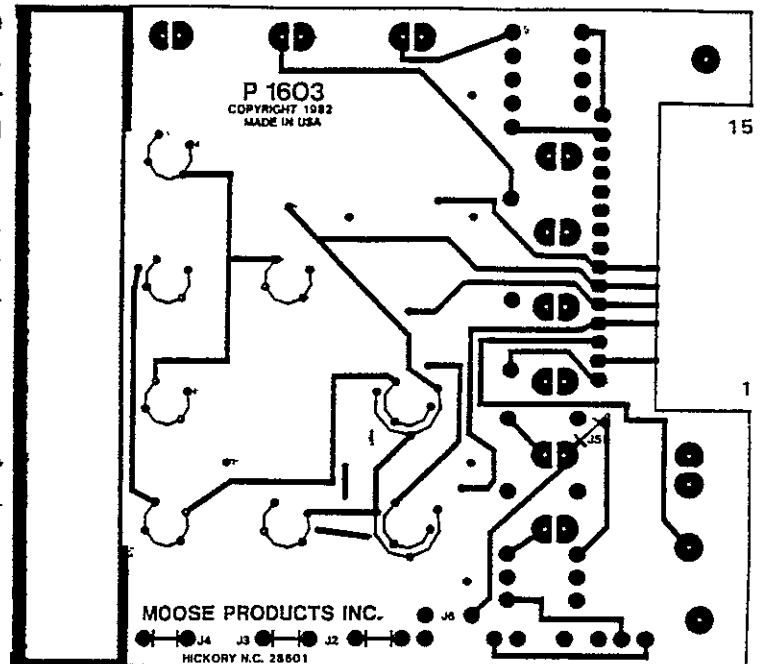
Pin 7 is a positive input from the power supply's "AC ON" terminal. Pin 8 is the negative lead and may be connected to the common negative of the power supply. To protect the power supply against shorting, install a 120 ohm 1/2 watt resistor or a one (1) amp fuse in series with the negative lead at the power supply. As an alternative the leads from terminals 7 and 8 may be connected across the low voltage terminals of the power supply's transformer.

PRINTED CIRCUIT BOARD WITH FOIL JUMPER OPTIONS

Foil Jumper J2 — If foil jumper J2 is cut, the number (#) key will be completely disabled. This may be useful to disable the police channel activation or to disable the zoning capability on certain controls.

Foil Jumper J3 — If foil jumper J3 is cut, the numbers "8" and "9" will be completely disabled. This may be useful to disable programming functions from the remote keypad or to limit keypad combinations that control zoning, fire or police channel activation.

Foil Jumper J4 — If foil jumper J4 is cut, the number (#) key will no longer operate as a zoning button for certain controls. However, the star (*) and number (#) keys, if pressed at the same time will still trigger the police channel code.



Example:

The remote keyboard will be placed in an area where children or strangers might activate zoning or emergency channels.

Cut foil jumpers J2 and J3. Zoning and emergency channel activation from the star (*) and number (#) as well as numerals eight (8) and (9) are disabled.

Cut foil jumper J4 instead of J2 to disable zoning capabilities only.

NOTE: Do Not Cut Foil Jumpers J5 or J6. (Factory use only).

HOOKUP OF THE MPI-275

Installation Hint

Enclosed with the MPI-275 is a green hookup card that provides a place to record the color code of the interconnecting wires and hookup charts for connecting the MPI-275 to the MPI-735 or MPI-775 controls. A blue hookup card is provided with the MPI-725 control that covers using the MPI-275 with the MPI-725 control.

MPI-275

FUNCTION

J1-Pin 1	(+) Power Supply Input
J1-Pin 2	(-) Pre-Alarm Input
J1-Pin 3	Keyboard "D" Output
J1-Pin 4	Keyboard "C" Output
J1-Pin 5	Keyboard "B" Output
J1-Pin 6	Keyboard "A" Output
J1-Pin 7	(+) AC LED (see step 10)
J1-Pin 8	(-) AC LED (see step 10)
J1-Pin 9	(-) Alarm Memory LED Input
J1-Pin 10	(-) Armed LED Input
J1-Pin 11	(-) Circuit Status LED Input
J1-Pin 12	(-) Instant LED Input

Step 11. J1-Pin 9 ALARM MEMORY LED INPUT

Pin 9 is the negative input for the Alarm Memory (Violation) LED.

Step 12. J1-Pin 10 ARMED LED INPUT

Pin 10 is the negative input for the Armed LED.

Step 13. J1-Pin 11 CIRCUIT STATUS LED INPUT

Pin 11 is the negative input for the Circuit Status LED.

Step 14. J1-Pin 12 INSTANT MODE LED INPUT

Pin 12 is the negative input for the Instant Mode LED.

Step 15. Plug the 12 pin, J1 wiring connector back into the MPI-275 remote station.

Step 15. Attach the interconnecting wires at the main control panel, power up, and check out operation of the MPI-275 remote keypad by making sure all LED's illuminate in the proper mode and that the arm/disarm code will arm and disarm the system.

Step 16. Secure the keypad to the mounting plate with the four (4) screws provided.

TAMPER PROTECTION

Due to the unique design of the MPI-275, the system cannot be defeated by taking the front cover off the wall. Tamper proofing is not required, but if additional protection is desired, a slim line magnetic reed type switch may be mounted inside the cover.

"LIMITED WARRANTY"

Parties and Products

This warranty is extended to all purchasers of and includes products sold under the trademarks Moose or Moose power and actually manufactured or sold by Moose Products, Inc., Hickory, N.C. 28601.

Warranty Time Period

All products covered by this warranty are date stamped with a six (6) digit number, the first digit being the tester number, the last two the year and the remaining the day of the year involved. For the eighteen months immediately subsequent to the date stamped thereon, Moose Products will replace or repair at its option, any part that proves to be defective in materials or workmanship. The cost of parts, labor and return transportation, if necessary, are included. All other costs are the responsibility of the purchaser.

Procedure

Should you discover that any products of Moose Products covered by this warranty is defective within the warranty time period, you should contact any Moose Products, Inc. dealer who will instruct you on the proper procedure. If for any reason you are dissatisfied with the suggested procedures, you may contact us in writing at:

Moose Products, Inc.
P.O. Box 2904
Customer Service Department
Hickory, N.C. 28603

Conditions and Exclusions

(a) There is no other express warranty. All implied warranties and fitness for use are limited to the duration of the express warranty.

Some states do not allow limitations on how long an implied warranty last, so the above limitation may not apply to you.

(b) Moose Products, Inc. is not liable for indirect, incidental, or consequential damages in connection with the use of the products including but not limited to (a) any cost or expense of providing substitute equipment or service during periods of malfunction or non-use and/or (b) any destruction to and/or loss of property or bodily injury.

(c) Repairs by anyone other than Moose Products, Inc. and/or misuse by anyone voids all warranty.

Other Rights

This warranty gives you specific legal rights and you may also have other rights, which may vary from state to state.