

# **Operation Manual**

**DWC-201 Burglar/Fire Alarm  
Control Panel**

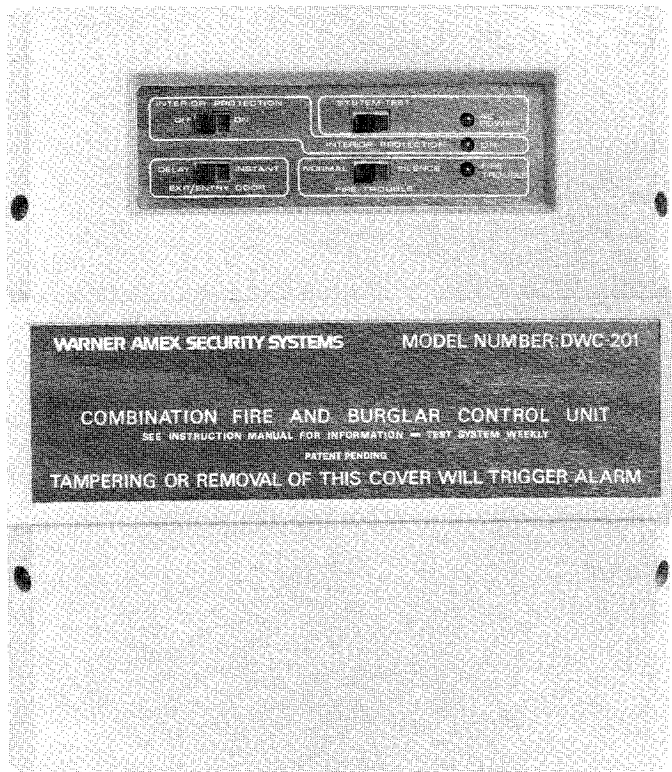
**DWR-200 Digital Remote**



**WARNER AMEX SECURITY SYSTEMS**

1216 Kinnear Rd.  
Columbus, Ohio 43212

U.L. LISTED



Thank you for selecting the Warner Amex DWC 201. You have selected a highly reliable, state-of-the-art system designed for your convenience and to assist in the protection of your home and family.

This manual is furnished to help you, and all whom you authorize, to understand the system and become proficient in its operation without creating false alarms as a result of improper use. Please keep this manual in a convenient location for your future reference.

#### DESCRIPTION

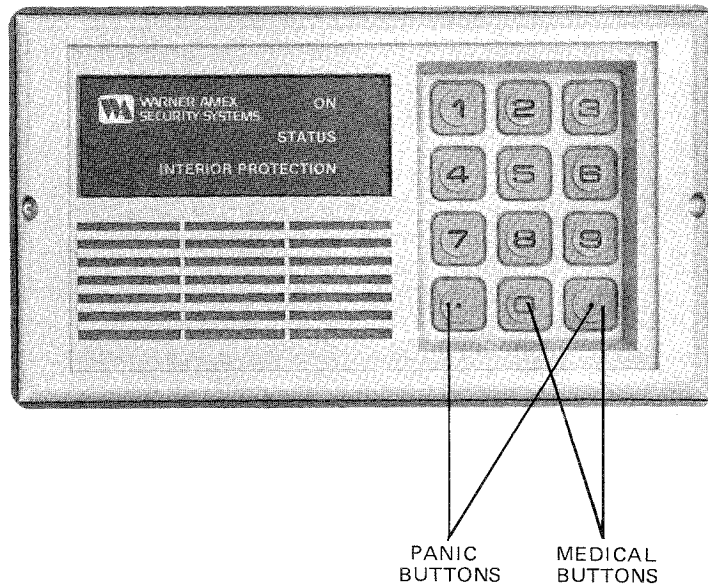
The DWC-201 system is designed to provide local and central station monitoring of burglar and fire alarm systems installed in your home or business. In addition, manually operated police call and medical alert service (if connected) is available. Communication between the control (Figure 1) and the central station is via a built-in automatic dialer using your home's telephone line. Security Systems which are connected to the Warner Amex cable have the added benefit of a dual communication system. This means that any alarms will be reported over the cable system to the central station. Upon a cable failure any alarms will be reported over your telephone line automatically to the central station. All alarms will be reported over the cable including A.C. power failure and fire supervisory. Dialer operation reports all alarm signals, but no supervisory signals.

## MASTER CODE

The burglar alarm system is turned on and off by entering an alternate or master code. This code is assigned exclusively to you, and it is programmed into the system at the time of installation. The remote unit (see Figure 2) provides a 12 digit keyboard for entering your master code into the system.

## TURNING THE SYSTEM ON

To turn the burglar alarm system on, close all protected windows and doors. The STATUS light on the remote unit will illuminate. Enter your master code using the keyboard. Each number entered produces a beep to confirm to you that the number was entered and help eliminate errors. Upon completing entry of the correct 4 digits, the "ON" light will illuminate, and a pulsing beep will sound for a pre-determined time, usually approximately 30 seconds indicating the time allowed for leaving the premises. The system is now "armed".



## TURNING THE SYSTEM OFF

To turn the burglar alarm system off, enter a correct 4 digit code on the keyboard. Upon completing entry of the correct four digits, the "ON" light will extinguish. The system is now disarmed.

## EXITING THE HOUSE

Exiting the premises when the alarm is turned on must be done through a specific door or doors designated by you during the installation of your system. This is usually the front and/or back door and the remote unit will usually be mounted by one or both of these doors and the system wired accordingly.

After turning the system on (refer to page 2), open the door, exit and lock the door. You do not have to rush, there is adequate time programmed for a normal exit while the tone is pulsing. You can normally hear the tone outside the door and are assured the system is armed when the tone stops.

## ENTERING THE HOUSE

Upon entering one of your "exit/entry" doors, a prealarm tone (a steady buzzing) sounds for a preset time, usually 30 seconds. During this time, enter your master code using the keyboard and the system will then disarm.

## INTERIOR PROTECTION

If your system is equipped with motion detectors: micro-waves, ultrasonics, passive infrared, etc. or pressure pads (under the carpet mats), such sensors may be connected into a special circuit called the Interior Protection. To turn the interior protection on, move the "Interior Protection" switch located on the front of the control panel to the ON position. The interior protection light (Zone In) on the remote unit will be illuminated. Now turn the system on in the normal manner.

To turn the interior protection off, it is necessary to turn the system off first, then move the "Interior Protection" switch located on the control panel to the OFF position.

FAILURE TO TURN OFF THE SYSTEM BEFORE SWITCHING THE INTERIOR PROTECTION OFF WILL CAUSE THE ALARM TO SOUND.

## DELAYED/INSTANT OPERATION

The paragraphs covering exit/entry routines indicated pre-determined time periods for these functions and listed the normal as 30 seconds. The system can be programmed for different times for exit and/or entry to better accommodate your individual home and lifestyle. This is best handled at the time of installation but can be changed later if necessary. (Contact Warner Amex Security Systems.)

A switch located on the front of the control panel permits the removal of the programmed delay time for all burglary features of the panel. When used, this feature offers additional security during bedtime hours by eliminating the exit/entry delays on your exterior doors and reports all violations instantly. To use the instant feature, move the switch located on the front of the control panel from the DELAY position to the INSTANT position. Then follow normal procedures to turn the system on.

It is recommended that the system normally be operated in the delay mode in order to reduce the possibility of false alarms from incorrect exit/entry procedures.

## MEDICAL ALARM

The medical alarm can be activated by depressing the right dot and O simultaneously. To cancel a medical alarm enter your correct master code or secondary code. The medical alarm is to be used in an extreme medical emergency where a medical squad is required.

## PANIC ALARM

The panic alarm can be activated by depressing the right dot and left dot simultaneously. To cancel a panic alarm, enter your correct master code or secondary code. The panic alarm is to be used in an extreme emergency situation where the police are required.

## ALARM SIREN

The system may be equipped with a siren to alert the household of an alarm condition. Initiation of a burglar alarm transmits the alarm status to the central station and at the same time actuates the local siren. The tone is a "warble" or up and down siren sound. The same siren horn is used for fire alarm alert, but the tone is a constant level siren sound. A panic alarm is the same warbled tone as used for burglar alarms. In all cases, the siren is silenced by entering your master code via the keyboard on the remote control unit.

## SUPERVISORY FUNCTIONS

The power for the system is supervised. An "AC Power" light located on the front of the control panel is illuminated when normal A.C. power is being provided to the system. If the A.C. power is interrupted, the AC Power light begins to flash on and off.

The system will now function on standby battery power. The battery will normally power the system for approximately 8 hours. The exact time will depend on the number of sensors installed with the system. Consult Warner Amex Security Systems for specific battery standby time.

The fire alarm system is also supervised. In the event of trouble, such as a broken wire on the fire sensor circuit, a short beep tone will sound on the control panel once every 15 seconds and a light labeled "Fire Trouble" will illuminate. If this occurs, move the FIRE TROUBLE switch to the right to silence the tone. The light will begin flashing. Call Warner Amex Security Systems for service. When the trouble is cleared, the light will again turn on constant and the beep tone will sound once every 15 seconds until the switch is moved to the left to its normal position.

Caution: Whenever the "Fire Trouble" light is on, either flashing or constant, your fire detection equipment may not be working properly. Do not take any chances with fire: call for service immediately.

## SYSTEM TEST

The SYSTEM TEST switch located on the front of the control panel permits you to test the system to assure you that it is functioning properly. Slide the switch to the right and hold for a few seconds. The siren will sound indicating proper operation. Release the switch, and it will return to its normal position. No alarm signal will be transmitted to the central station during this test.

We recommend you test the system at least once a week. If the alarm siren does not sound when the test switch is pushed, or the STATUS light on the remote begins to flash, there is a problem with the unit. Call Warner Amex Security Systems immediately for service.

## ALTERNATE CODE

An alternate code can be programmed into the system for use by babysitters, guests, or other people authorized by you to turn your alarm system on and off. The alternate code allows you to accomplish this without revealing your master code.

To program the alternate code:

1. System must be disarmed.
2. Press the dot in the lower left corner of the keyboard on the remote unit.
3. Enter your master code within 4 seconds.
4. Enter the number "3". Your system is now ready to accept your alternate code.
5. Enter the alternate code (any four digit number you choose).
6. Press the lower left dot again.
7. The alternate code is now programmed into the unit. It is good practice to test it by turning the system on and off using the alternate code. Use the same procedure to turn the system on or off as used with the master code.

To remove an alternate code:

1. The system must be disarmed.
2. Press lower left dot.
3. Enter your master code within 4 seconds.
4. Enter the number "3".
5. Enter your master code again.
6. Press lower left dot.
7. Alternate code is now removed.

### FALSE ALARMS

Subscriber-initiated false alarms are usually the result of unfamiliarity with the system or hurrying through the procedures. We encourage you to train all the members of the family who will be using the system until they feel confident in the procedures. If you have any questions not answered in this manual, please don't hesitate to contact Warner Amex Security Systems.

WARNER AMEX SECURITY SYSTEMS \_\_\_\_\_

TELEPHONE NUMBER \_\_\_\_\_

MASTER CODE \* \_\_\_\_\_

DATE INSTALLED \_\_\_\_\_

### WARRANTY

Limited Warranty: Warranty to repair or replace. The company agrees to repair or replace, at no cost to the customer, any part of the equipment which proves to be defective in material or workmanship at any time within one (1) year of the date of completion of installation (The "warranty to repair or replace") The Warranty to Repair or Replace shall not cover damage to the Equipment resulting from (i) electric or telephone company outages; (ii) acts of God or any other events out of the Company's control; (iii) alteration, misuse, tampering by the Customer or his or her immediate family, or their invitees; or (iv) failure of the Customer to properly follow the operating instructions provided by the Company at the time of installation of the Equipment.

NOTE: After the installation of your alarm system has been completed, notify your local Fire and Police Departments to give them your name and address for their records.

\* WARNING: Your safety and security depend on limiting the knowledge of this number to people who must need to know it. Keep this booklet and anything else on which your master code is written, in a safe place.

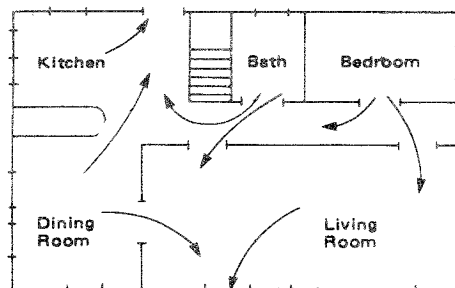
## EMERGENCY EVACUATION PLAN

An emergency evacuation plan should be established for an actual fire alarm condition. For example, the following steps are recommended by the National Fire Protection Association and can be used as a guide in establishing this plan for homes. Similar plans may be made for commercial establishments.

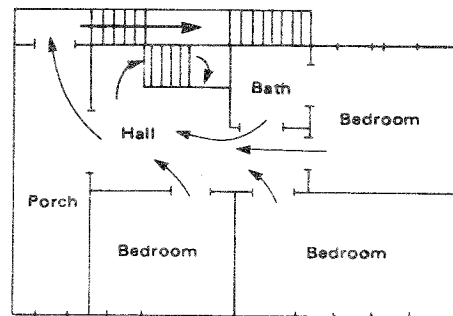
1. Draw up a floor plan of your home. Show windows, doors, stairs, and rooftops that can be used for escape. Indicate each family member's escape routes. Always keep these routes free from obstruction. See examples - Figure 3.
2. Determine two means of escape from each bedroom. One will be the door leading to the normal exit from the house. The other may be a window that opens easily. An escape ladder may have to be located near the window if there is a long drop to the ground below.
3. Set a meeting place outdoors for a head count of family members.
4. Practice escape procedures. Sleep with the bedroom door closed. It will increase your escape time. If you suspect fire, test the door. If it is hot, don't open it—the hall is already too hot to enter. If you think it's safe, brace your shoulder against the door and open it cautiously. Be ready to slam the door if smoke or heat rush in. Practice escaping to the outdoors and meeting at an assigned spot. Call the fire department from a neighbor's phone.



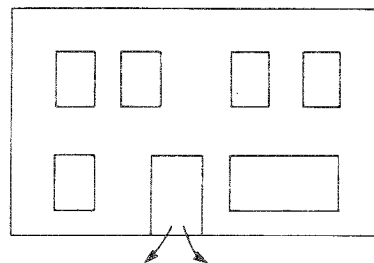
Figure 3



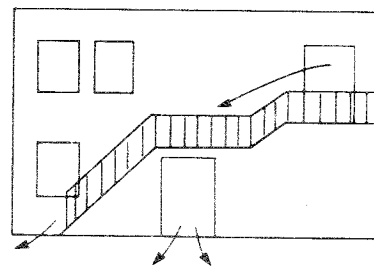
First Floor



Second Floor



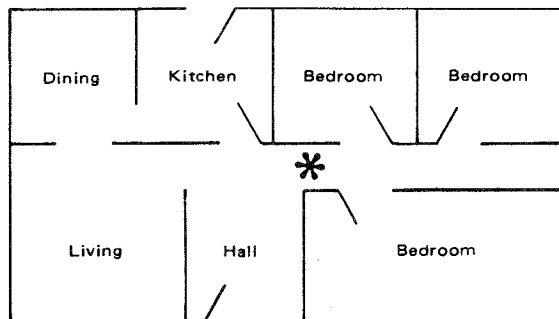
Front



Back

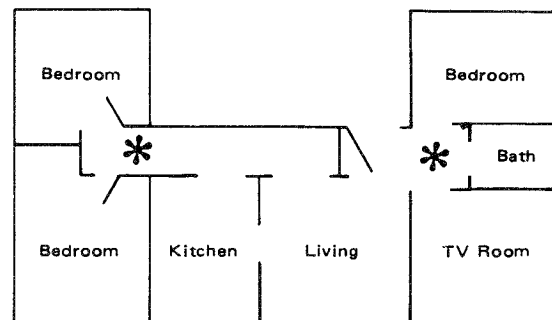
## DETECTOR INSTALLATION & PLACEMENT

Since most fires in a home occur at night when everyone is asleep, the ideal location for a minimum of one smoke detector is between the bedroom area and the rest of the house. If the bedrooms are spread out or if they are located in different sections of the house, one smoke detector should be placed near each of these sleeping areas.



**Best Residential Detector Location Placement  
Between Bedrooms and Rest of House**

In multi-level houses, one smoke detector may be sufficient to protect an entire floor. Since smoke rises, a stairwell in a home tends to become a natural "chimney" for smoke rising from one level to the next. Therefore, by locating a smoke detector near the top of the stairs leading to a main sleeping area, all bedrooms can be successfully protected using a minimum of units.



**NOTE: Place Detector Near All Sleeping Areas**

Figure 4