

DIGITAL REMOTE CONTROL STATION

MPI-279

SPECIFICATIONS & INSTRUCTIONS

moose

APPLICATION

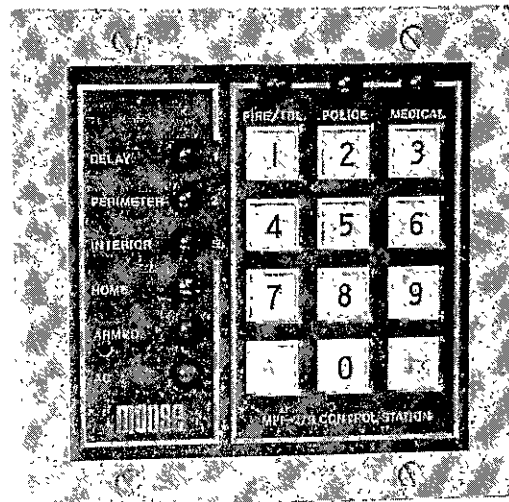
The MPI-279 Is A Digital Remote Arm/Disarm Station For The MPI-725 Or Any Other Control Using Positive Binary Keyboard Input.

SPECIFICATIONS

- 6 To 15 Volt DC Operation.
- Twelve (12) Digit Keypad:
 - (1). Over One Million Operations.
 - (2) .1 Inch (2.2mm) Key Stroke.
- Operating Current: 10 To 100 Milliamps (Varies with number of LED's illuminated).
- All LED's Negative Trigger.
- Fire, Police, And Medical Two Button Panics.
- Indoor Or Covered Outdoor Environment.
- Temperature Operating Range:
 - 22 To 122 Degrees F (-30 To + 50Degrees C).
- Mounting Plate Surface Mounts To The Wall, One Or Two Gang Electrical Box.
- Dimensions: 4.6 x 4.5 x .7 Inches.
- Direct Connection To The MPI-725.
- Positive Binary Keypad Output.

FEATURES:

- Nine (9) Light Emitting Diodes.
 - (1) Delay Zone 1 LED
 - (2) Perimeter Zone 2 LED
 - (3) Interior Zone 5 LED
 - (4) Home Mode LED
 - (5) Armed LED
 - (6) AC LED
 - (7) Fire/Trouble Channel LED
 - (8) Police Channel LED
 - (9) Medical Channel LED
- Built-In Pre-Alarm.
- Unpluggable Wiring Harness.



© 1985 MOOSE PRODUCTS INC.

1510 Tate Boulevard, S.E. • P.O. Box 2904
Hickory, N.C. 28603 U.S.A. • Phone (704) 322-2333
Toll Free (800) 438-8175 • Telex 802-111

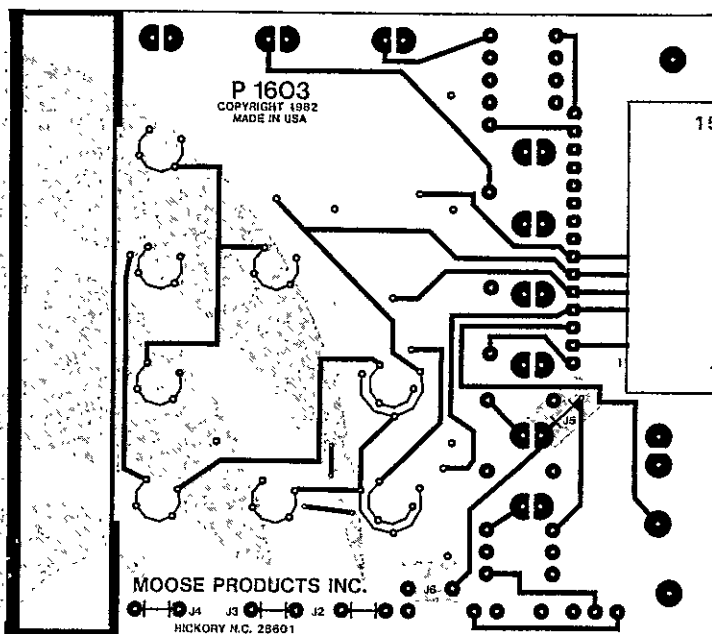
moose products inc.

PRINTED CIRCUIT BOARD WITH FOIL JUMPER OPTIONS

Foil Jumper J2 — If foil jumper J2 is cut, the number (#) key will be completely disabled. This may be useful to disable the police channel activation or to disable the zoning capability.

Foil Jumper J3 — If foil jumper J3 is cut, the numbers "8" and "9" will be completely disabled. This may be useful to disable programming functions from the remote keypad or to limit keypad combinations that control zoning, fire or police channel activation.

Foil Jumper J4 — If foil jumper J4 is cut, the number (#) key will no longer operate as a zoning button. However, the star (*) and number (#) keys, if pressed at the same time will still trigger the police channel code.



Example:

The remote keyboard will be placed in an area where children or strangers might activate zoning or emergency channels.

NOTE: Foil Jumpers J5 & J6 should not be changed. (Production options).

Cut foil jumpers J2 and J3. Zoning and emergency channel activation from the star (*) and number (#) as well as numerals eight (8) and (9) are disabled.

Cut foil jumper J4 instead of J2 to disable zoning capabilities only.

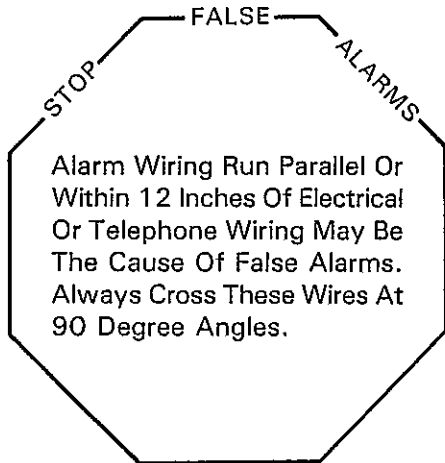
REMOTE CONTROL STATION HOOKUP TO MPI-725

Hookup summary and record sheet for MPI-725 and MPI-279 remotes:

MPI-279	Installer Wire Color Codes	MPI-725	Usage
J1-Pin 15	Blu/Wht	Terminal 15	(-) Fire/Trouble LED
J1-Pin 14	Grn/Wht	Terminal 14	(-) Police LED
J1-Pin 13	Red/Wht	Terminal 13	(-) Zone 1 LED
J1-Pin 12	Tan	Terminal 12	(-) Zone 2 LED
J1-Pin 11	Pink	Terminal 11	(-) Zone 5 LED
J1-Pin 10	Grey	Terminal 10	(-) Home (Instant) LED
J1-Pin 9	Purple	Terminal 9	(-) Armed LED
J1-Pin 8	Yellow	Terminal 8	(-) AC LED
J1-Pin 7	Orange	Terminal 7	Keyboard "A"
J1-Pin 6	Blue	Terminal 6	Keyboard "B"
J1-Pin 5	Brown	Terminal 5	Keyboard "C"
J1-Pin 4	Green	Terminal 4	Keyboard "D"
J1-Pin 3	Red	Terminal 3	(-) Pre-alarm
J1-Pin 2	White	Terminal 2	(+) 12 VDC
J1-Pin 1	Black	Terminal 1	(-) Medical LED

INSTALLATION INSTRUCTIONS:

Step 1. Attach the mounting plate to the wall or to an electrical box. (Use the mounting plate as a template for mounting without using an electrical box).



Step 2. Run multi-conductor wire between the control and the MPI-279. Record the color of the interconnecting wires on the blue card enclosed with the MPI-279.

Step 3. Unplug the 15 Pin, J1 wiring connector from the MPI-279 remote station.

Step 4. J1-Pin 1 Medical LED
Pin 1 is a negative input for the Medical Alarm LED

Step 5. J1-Pin 2 DC Input Voltage
Pin 2 is the positive voltage input. (+ 6 to 12 volts DC)
J1-Pin 2 is the common positive voltage for the LED's, keyboard, and the pre-alarm.

Step 6. J1-Pin 3 Negative Pre-Alarm
Pin 3 is the negative input lead for the on-board pre-alarm (Piezo Resonator). When triggered, the Piezo Resonator will provide a steady audible tone at approximately 7500 Hertz.

Truth TABLE 1

The output from the keyboard provides a positive binary format. A one (1) represents + 12 VDC and a zero (0) represents no output.

Step 7. J1-Pin 4 Keyboard "D" Output
Pin 4 provides a positive binary output according to Table 1.

Step 8. J1-Pin 5 Keyboard "C" Output
Pin 5 provides a positive binary output according to Table 1.

Step 9. J1-Pin 6 Keyboard "B" Output
Pin 6 provides a positive binary output according to Table 1.

Step 10. J1-Pin 7 Keyboard "A" Output
Pin 7 provides a positive binary output according to Table 1.

Step 11. J1-Pin 8 AC LED
Pin 8 is the negative input for the AC LED

PIN	4	5	6	7
	D	C	B	A
No Key	0	0	0	0
Digit 1	0	0	0	1
Digit 2	0	0	1	0
Digit 3	0	0	1	1
Digit 4	0	1	0	0
Digit 5	0	1	0	1
Digit 6	0	1	1	0
Digit 7	0	1	1	1
Digit 8	1	0	0	0
Digit 9	1	0	0	1
Digit 0	1	0	1	0
* Instant	1	0	1	1
* Police #	1	1	1	1
5 Fire 8	1	1	0	1
# Medical 0	1	1	1	0

Step 12. J1-Pin 9 Armed LED

Pin 9 is the negative input for the Armed LED

Step 13. J1-Pin 10 Home/Away LED

Pin 10 is the negative input for the Home/Away LED

Step 14. J1-Pin 11 Interior (Zone 5) LED

Pin 11 is the negative input for the Interior (Zone 5) LED

Step 15. J1-Pin 12 Perimeter (Zone 2) LED

Pin 12 is the negative input for the Perimeter (Zone 2) LED

Step 16. J1-Pin 13 Delay (Zone 1) LED

Pin 13 is the negative input for the Delay (Zone 1) LED

Step 17. J1-Pin 14 Police LED

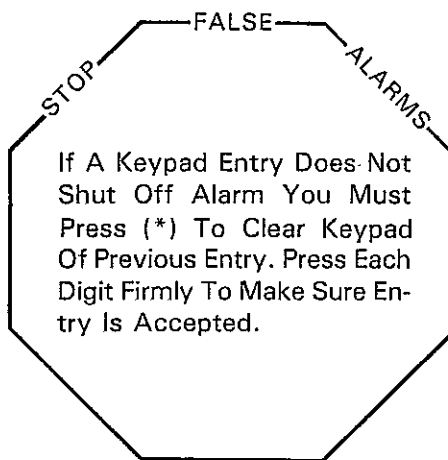
Pin 14 is the negative input for the Police LED

Step 18. J1-Pin 15 Fire/Trouble LED

Pin 15 is the negative input for the Fire/Trouble LED

Step 19. Secure the keypad to the mounting plate with the four (4) screws provided.

Step 20. Attach wiring to main control, power up, and check out operation of the MPI-279 remote keypad by making sure all LED's illuminate in the proper mode and that the arm/disarm code will arm and disarm the system.



TAMPER PROTECTION

Due to the unique design of the MPI-279, tamper proofing is not required. The system cannot be defeated by taking the front cover off the wall. If tamper proofing is desired, a slim line magnetic reed type switch may be mounted inside the case.

"LIMITED WARRANTY"

Parties and Products

This warranty is extended to all purchasers of and includes products sold under the trademarks Moose or Moose Power and actually manufactured or sold by Moose Products, Inc., Hickory, N.C. 28601.

Warranty Time Period

All products covered by this warranty are date stamped with a six (6) digit number, the first digit being the tester number, the last two the year and the remaining the day of the year involved. For the eighteen months immediately subsequent to the date stamped thereon, Moose Products will replace or repair at its option, any part that proves to be defective in materials or workmanship. The cost of parts, labor and return transportation, if necessary, are included. All other costs are the responsibility of the purchaser.

Conditions and Exclusions

- (a) There is no other express warranty. All implied warranties and fitness for use are limited to the duration of the express warranty. Some states do not allow limitations on how long an implied warranty last, so the above limitation may not apply to you.
- (b) Moose Products, Inc. is not liable for indirect, incidental, or consequential damages in connection with the use of the products including but not limited to (a) any cost or expense of providing substitute equipment or service during periods of malfunction or non use and/or (b) any destruction to and/or loss of property or bodily injury.
- (c) Repairs by anyone other than Moose Products, Inc. and/or misuse by anyone voids all warranty.

Other Rights

This warranty gives you specific legal rights and you may also have other rights, which may vary from state to state.

Procedure

Should you discover that any products of Moose Products covered by this warranty is defective within the warranty time period, you should contact any Moose Products, Inc. dealer who will instruct you on the proper procedure. If for any reason you are dissatisfied with the suggested procedures, you may contact us in writing at:

Moose Products, Inc., P.O. Box 2904, Customer Service Department, Hickory, N.C. 28603